

**ALABAMA
PORT AUTHORITY**

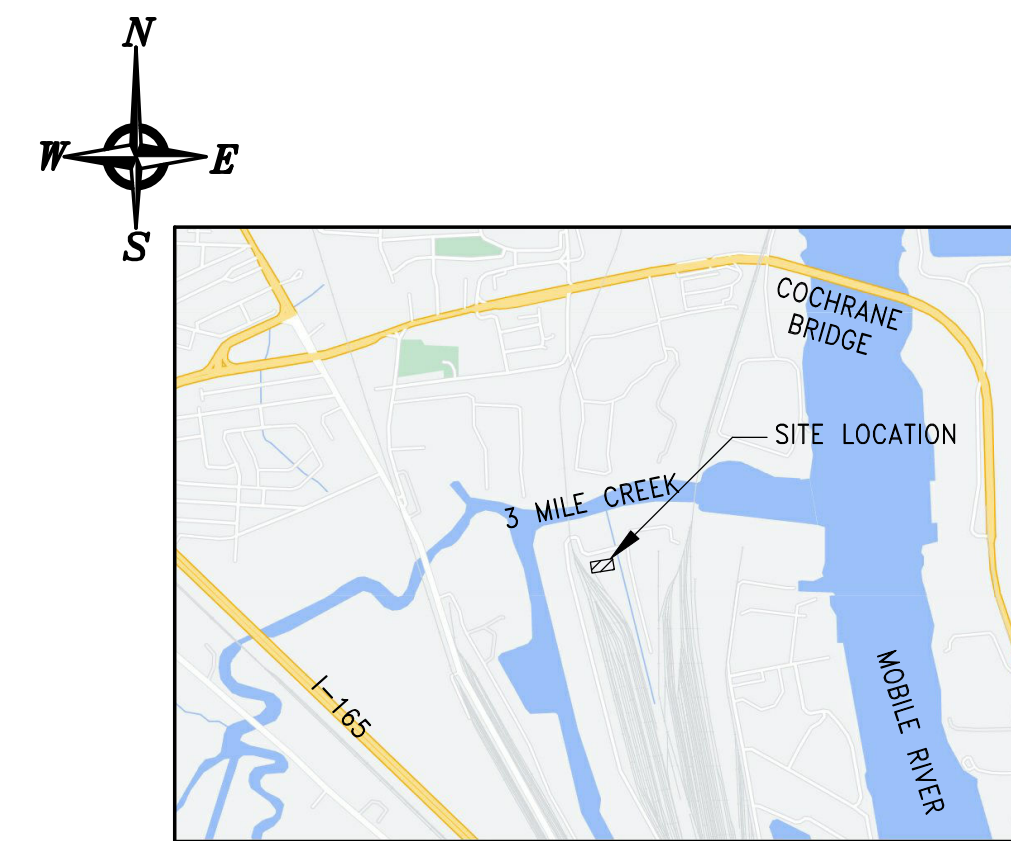
TERMINAL RAILROAD TRAINING CENTER MOBILE, ALABAMA

KAY IVEY, GOVERNOR
DOUG OTTO, DIRECTOR AND C.E.O

ALABAMA STATE PORT AUTHORITY - BOARD OF DIRECTORS

ZEKE SMITH, CHAIRMAN
CARL JAMISON, 1st VICE CHAIR
ROBERT HOPE, 2nd VICE CHAIR
BRANDON BISHOP
TONY COCHRAN

GARY SMITH
DR. PATRICIA SIMS
SANDY STIMPSON
CONNIE HUDSON



LOCATION MAP
N.T.S.

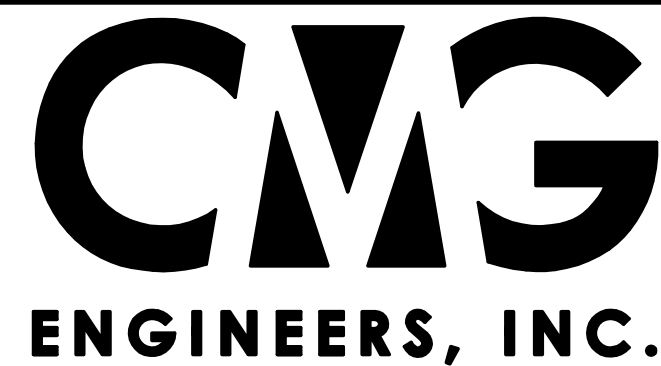
DRAWING SCHEDULE:

- 4735-C0 - COVER SHEET
- 4735-G1 - GENERAL NOTES
- 4735-G2 - GENERAL NOTES
- 4735-F1 - FOUNDATION PLAN
- 4735-S1 - FLOOR PLAN
- 4735-S2 - EXTERIOR ELEVATIONS
- 4735-S3 - DOOR AND WINDOW SCHEDULE
- 4735-E1 - ELECTRICAL SITE PLAN
- 4735-E2 - ELECTRICAL LIGHTING PLAN
- 4735-E3 - ELECTRICAL POWER PLAN

FOR REFERENCE ONLY DRAWINGS
4146-S6 AS-BUILT - FOR REFERENCE, SEE COMMENTS
4146-S7 AS-BUILT - FOR REFERENCE, SEE COMMENTS

REV.	DESCRIPTION	DATE	BY	CHK'D
A	ISSUED FOR BID	04/24/26	WTC	GDEC

11880 Cranston Drive, Ste. 101
Arlington, Tennessee 38002
(901) 290-5444



457 St. Michael Street
Mobile, Alabama 36602
(251) 433-1611

PROJECT	TERMINAL RAILROAD TRAINING CENTER
	126 INDUSTRIAL CANAL ROAD MOBILE, ALABAMA



TITLE	COVER SHEET
DATE	01/14/26
22x34 REV.	A
DRAWING NUMBER	4735-C0

© CMG ENGINEERS, INC. 2026 -
CONFIDENTIAL, VALUABLE, AND
PROPRIETARY INFORMATION

STRUCTURAL STEEL GENERAL NOTES

REFERENCE SPECIFICATIONS

- STRUCTURAL STEEL WORK SHALL BE IN ACCORDANCE WITH AISC SPECIFICATIONS
- STRUCTURAL STEEL DESIGN, FABRICATION AND ERECTION SHALL BE IN ACCORDANCE WITH AISC "SPECIFICATION FOR STRUCTURAL STEEL BUILDINGS – ALLOWABLE STRESS DESIGN AND PLASTIC DESIGN" (1989) AND "CODE OF STANDARD PRACTICE FOR STEEL BUILDINGS AND BRIDGES" (1992).
- HIGH STRENGTH BOLTING SHALL BE IN ACCORDANCE WITH AISC "SPECIFICATION FOR STRUCTURAL JOINTS USING ASTM A325 BOLTS OR A490 BOLTS" (1994).
- ALL WELDING SHALL BE PERFORMED BY AWS CERTIFIED WELDERS AND IN ACCORDANCE WITH THE AMERICAN WELDING SOCIETY STANDARD D1.1, LATEST EDITION.

MATERIALS

- STRUCTURAL STEEL "W", "WT" AND "S" SHAPES SHALL CONFORM TO ASTM A992, GRADE 50. ALL CHANNELS, ANGLES AND PLATES SHALL CONFORM TO ASTM A572 GR 50 UNLESS NOTED OTHERWISE OR APPROVED EQUAL.
- HIGH STRENGTH BOLTS, NUTS AND HARDENED WASHERS SHALL CONFORM TO ASTM A325, ASTM A563 DH, AND ASTM F436 RESPECTIVELY. MACHINE BOLTS AND NUTS SHALL CONFORM TO ASTM A307, AND PLAIN WASHERS SHALL CONFORM TO ANSI B18.22.1. BOLTS, NUTS AND WASHERS SHALL BE HOT DIP GALVANIZED.
- WELDING ELECTRODES USED FOR FIELD CONNECTIONS SHALL CONFORM TO AWS A5.1, CLASS E70XX UNLESS NOTED OTHERWISE ON THE DRAWINGS. WELDING ELECTRODES USED FOR SHOP CONNECTIONS SHALL CONFORM TO AWS A5.1 WITH A MINIMUM ELECTRODE TENSILE STRENGTH OF 70 KSI, UNLESS NOTED OTHERWISE ON THE DRAWINGS.

FABRICATION AND ERECTION

- NO TEMPORARY ERECTION BOLTS OTHER THAN HIGH STRENGTH BOLTS SHALL BE USED DURING ERECTION OF THE MEMBERS REQUIRING HIGH STRENGTH BOLTS.
- WHEN CONNECTIONS REQUIRE FIELD PREPARATION OF BOLT HOLES, THE HOLES SHALL BE DRILLED OR PUNCHED, AND THE DIAMETER OF THE BOLT HOLES SHALL BE 1/16 INCH GREATER THAN THE NOMINAL BOLT DIAMETER.
- FIELD CORRECTING OF FABRICATED STEEL BY GAS CUTTING SHALL NOT BE PERMITTED ON MAJOR STRUCTURAL FRAMING MEMBERS WITHOUT PRIOR APPROVAL OF THE ENGINEER.
- ALL ANGLE AND STRUCTURAL TEE BRACING SHALL HAVE 1/8 INCH DRAW PER 10 FEET OF LENGTH. MAXIMUM DRAW SHALL BE 3/16 INCH AND NO DEDUCTION SHALL BE MADE FOR LENGTHS LESS THAN 10 FEET.
- FILLET WELD SIZES, IF NOT CALLED OUT ON THE DRAWINGS, SHALL BE 3/16 INCH MINIMUM UNLESS TABLE J2.4 OF AISC "SPECIFICATION FOR STRUCTURAL STEEL BUILDINGS – ALLOWABLE STRESS DESIGN AND PLASTIC DESIGN" REQUIRES A LARGER SIZE.
- SLIP CRITICAL HIGH STRENGTH BOLTED CONNECTIONS SHALL BE INSTALLED AND TIGHTENED THROUGH THE USE OF "TURN-OF-THE-NUT" TIGHTENING AS PROVIDED IN THE AISC SPECIFICATION FOR STRUCTURAL JOINTS USING ASTM A325 OR A490 BOLTS. ALL NON-SLIP CRITICAL BOLTS MAY BE TIGHTENED TO A "SNUG-TIGHT" CONDITION AS DEFINED BY AISC.
- THE CONTRACTOR SHALL NOT CUT OR ALTER STRUCTURAL MEMBERS WITHOUT THE APPROVAL OF THE ENGINEER.
- ERECTOR SHALL PROVIDE ALL TEMPORARY SHORING AND BRACING NEEDED FOR STABILITY UNTIL STRUCTURE IS COMPLETE.
- PAINTED SURFACES THAT HAVE BEEN DAMAGED BY WELDING, CUTTING, BURNING, SHEARING OR OTHER DAMAGE INCURRED DURING TRANSIT OR ERECTION SHALL BE REPAIRED TO PROVIDE A FINISH IN ACCORDANCE WITH SPECIFICATIONS.

CONNECTIONS

- BOLTED CONNECTIONS FOR SECONDARY STRUCTURAL MEMBERS (PURLINS, GIRTS, STAIR FRAMING, STAIR BRACING, TOE PLATE, HANDRAIL, LADDERS, ETC) SHALL BE BOLTED WITH HIGH STRENGTH BOLTS CONFORMING TO ASTM A325, UNLESS NOTED OTHERWISE ON THE DRAWINGS.
- WHEN CONNECTION DETAILS ARE NOT SHOWN ON THE DRAWINGS, CONNECTIONS SHALL BE DESIGNED IN ACCORDANCE WITH AISC SPECIFICATIONS.
- HIGH STRENGTH BOLT SIZES SHALL BE 3/4 INCH DIAMETER (UNO) EXCEPT THAT TOE PLATES, HANDRAIL AND LADDERS SHALL BE BOLTED WITH 5/8 INCH DIAMETER BOLTS.
- FIELD CONNECTIONS SHALL BE MADE WITH GALVANIZED ASTM-A325 HIGH STRENGTH BOLTS, BEARING TYPE CONNECTIONS WITH THREADS EXCLUDED FROM SHEAR PLANE. CONNECTIONS SHALL BE MADE WITH 3/4" DIA. BOLTS UNLESS OTHERWISE NOTED.
- ALL SHOP CONNECTIONS SHALL BE WELDED. BEAM CONNECTIONS SHALL USE TABLE III, CASE 1 WELD A, WITH TABLE II BOLTED CONNECTIONS. WELDING SHALL BE IN ACCORDANCE WITH AISC SPECIFICATIONS AND AWS D1.1 STRUCTURAL WELDING CODE USING E70XX ELECTRODES.
- MINIMUM NUMBER OF BOLTS IN CONNECTIONS NOT OTHERWISE DETAILED. DIAGONAL ANGLE BRACING – 3 OTHER BRACING – TO DEVELOP 50% OF MEMBER STRENGTH BEAMS (WF & CHANNEL) – MAXIMUM NO. MEMBER WILL ACCOMMODATE.
- ALL WELDED JOINTS SHALL BE WELDED CONTINUOUSLY. MINIMUM WELD SIZE SHALL BE 1/4" FILLET.
- ALL ANCHOR BOLTS SHALL BE GALVANIZED.

DETAILS


- HOLES FOR 3/8" BOLTS SHALL BE 1/2" DIA., HOLES FOR 1/2" BOLTS SHALL BE 5/8" DIA. AND FOR 5/8" BOLTS SHALL BE 3/4" DIA. UNLESS NOTED OTHERWISE.
- BRACING MEMBERS MEETING AT A POINT SHALL HAVE THEIR GRAVITY AXIS MEETING AT ONE POINT IF PRACTICABLE. IF NOT, PROVISIONS SHALL BE MADE FOR BENDING STRESSES DUE TO ECCENTRICITY.
- CLIP ANGLES AND GUSSET PLATES SHALL BE 3/8" THICK UNLESS NOTED OTHERWISE.
- COLUMN BASES AND SPLICED ENDS SHALL BE MILLED OR SAW CUT TO PROVIDE FULL BEARING.
- BRACING: ALL RECESSED DIMENSIONS (I.E. -6, -8 ETC.) ARE NOMINAL DIMENSIONS FOR MEMBER CLEARANCE ONLY. THE FABRICATOR AND DETAILER SHALL PROVIDE FOR CLEARANCE AT BOLTS, PLATES, AND ANY OTHER INTERFERENCES.

COATINGS

- ALL STEEL SURFACES TO BE PAINTED SHALL BE BLAST CLEANED TO NEAR-WHITE CONDITION IN ACCORDANCE WITH SSPC-SP 10-82.
- ALL STEEL SURFACES, EXCEPT MACHINED ITEMS, OR NOTED OTHERWISE, SHALL BE PAINTED. PAINTING SYSTEM AS FOLLOWS:
- PRIME COAT** – SHOP APPLIED. PRIME WITH ONE COAT OF INORGANIC ZINC WITH MIL. DFT. CARBO ZINC 11 AS MANUFACTURED BY CARBOLINE, OR AN APPROVED EQUAL.
- INTERMEDIATE COAT** – SHOP APPLIED. ONE COAT OF EPOXY PRIMER WITH 3 TO MIL. DFT. CARBOLINE 893
- TOP COAT** – SHOP APPLIED. TOP COAT IS ONE (1) COAT OF HIGH BUILD VINYL WITH 4 MIL. DFT. POLYCLAD 134HS AS MANUFACTURED BY CARBOLINE, OR AN APPROVED EQUAL.

A	ISSUED FOR BID	04/24/26	WTC	GDEC
REV.	DESCRIPTION	DATE	BY	CHK'D

11880 Cranston Drive, Ste. 101
Arlington, Tennessee 38002
(901) 290-5444

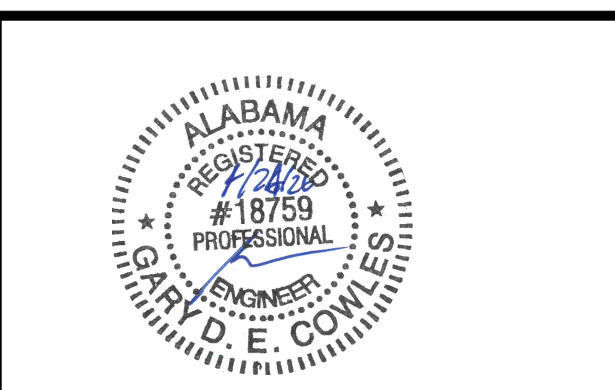


457 St. Michael Street
Mobile, Alabama 36602
(251) 433-1611

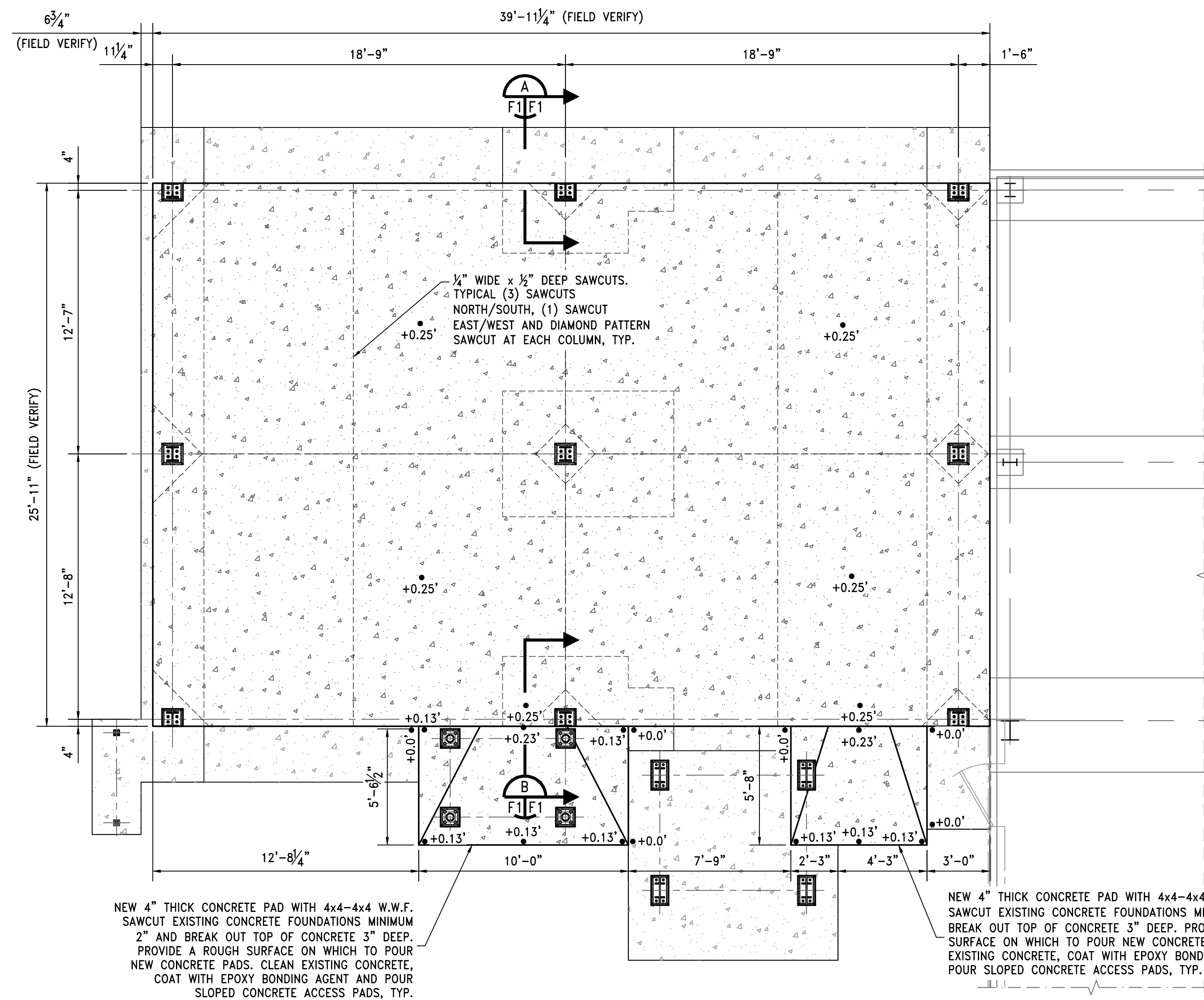
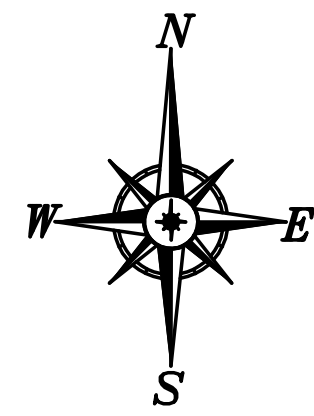
PROJECT

TERMINAL RAILROAD TRAINING CENTER

126 INDUSTRIAL CANAL ROAD
MOBILE, ALABAMA



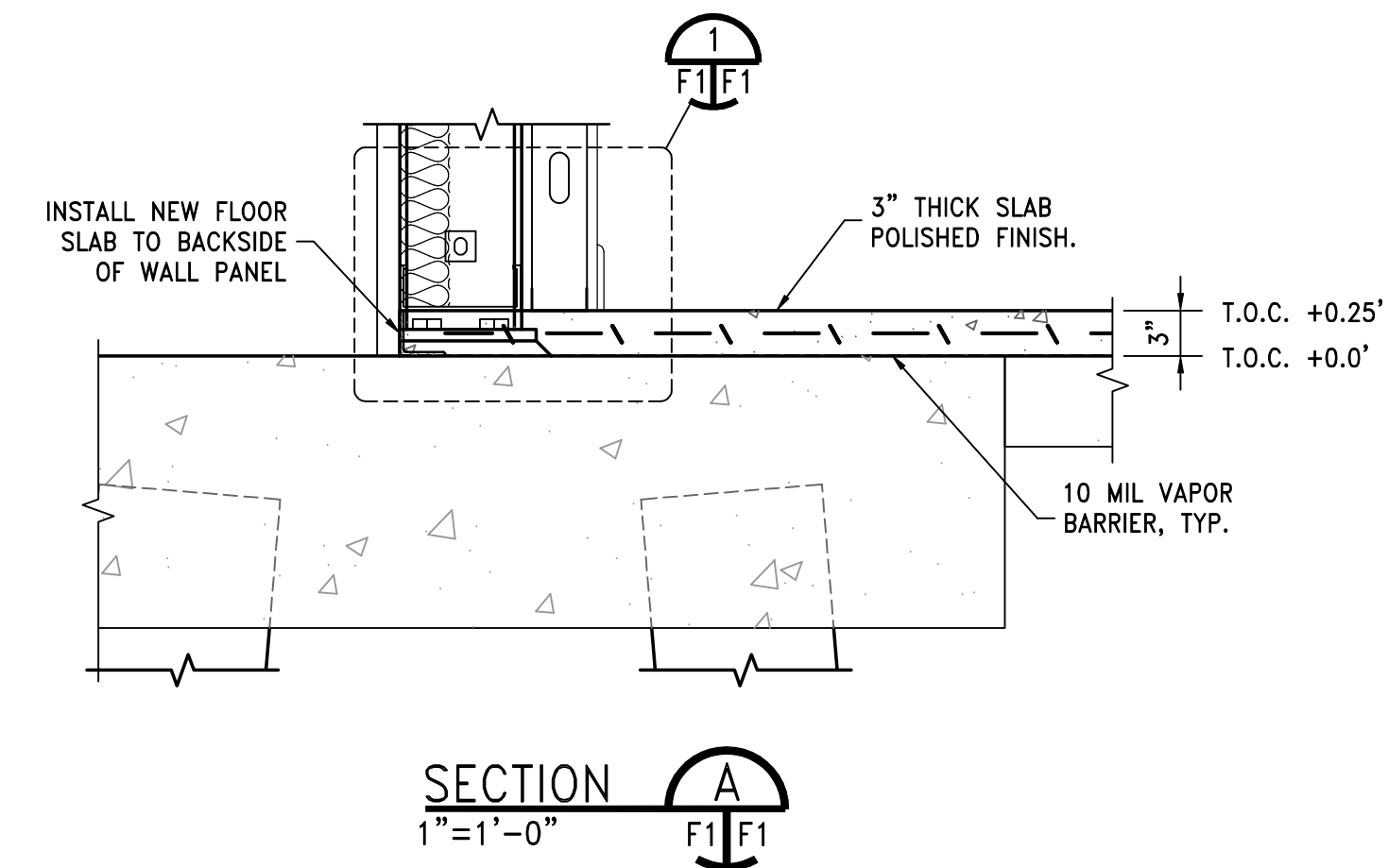
TITLE		GENERAL NOTES	
DATE	01/14/26	22x34	REV. A
© CMG ENGINEERS, INC. 2026 - CONFIDENTIAL, VALUABLE, AND PROPRIETARY INFORMATION		DRAWING NUMBER	4735-G2



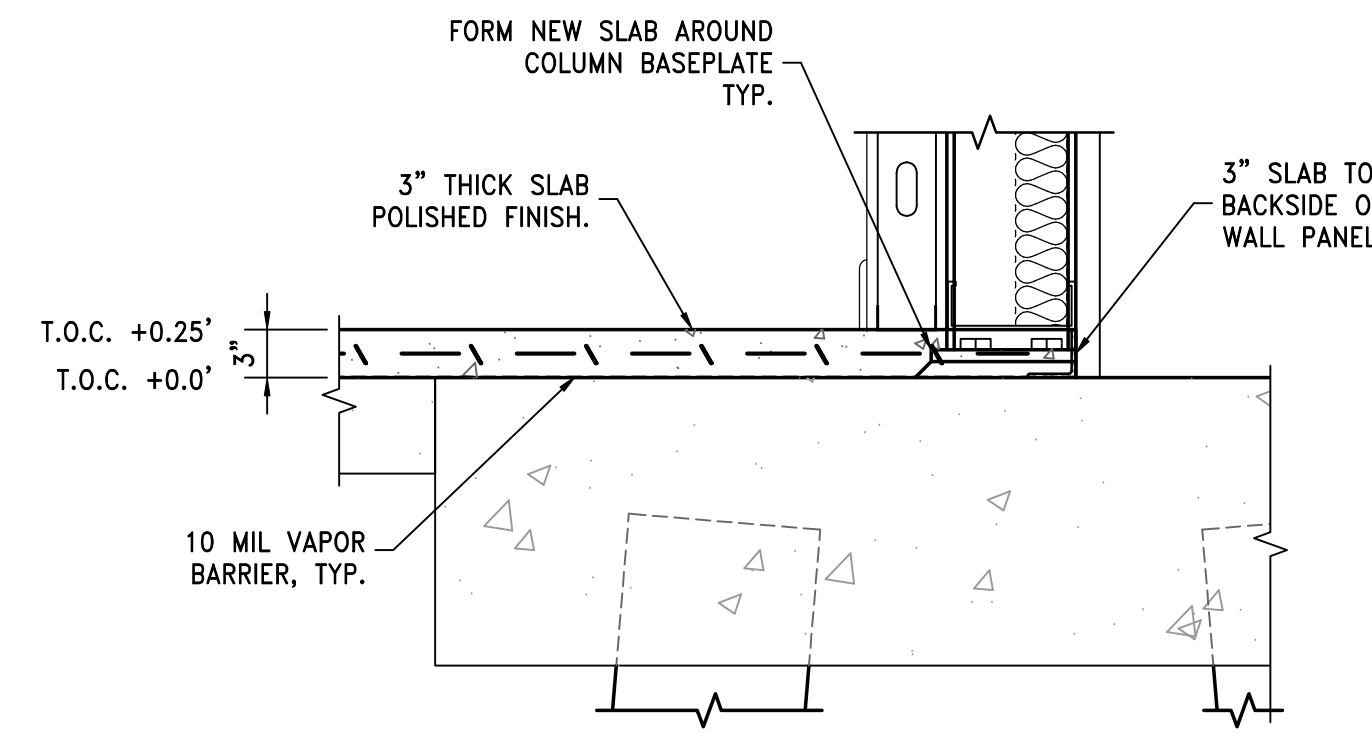
NEW 4" THICK CONCRETE PAD WITH 4x4-4x4 W.W.F. SAWCUT EXISTING CONCRETE FOUNDATIONS MINIMUM 2" AND BREAK OUT TOP OF CONCRETE 3" DEEP. PROVIDE A ROUGH SURFACE ON WHICH TO POUR NEW CONCRETE PADS. CLEAN EXISTING CONCRETE, COAT WITH EPOXY BONDING AGENT AND POUR SLOPED CONCRETE ACCESS PADS, TYP.

NEW 4" THICK CONCRETE PAD WITH 4x4-4x4 W.W.F. SAWCUT EXISTING CONCRETE FOUNDATIONS MINIMUM 2" AND BREAK OUT TOP OF CONCRETE 3" DEEP. PROVIDE A ROUGH SURFACE ON WHICH TO POUR NEW CONCRETE PADS. CLEAN EXISTING CONCRETE, COAT WITH EPOXY BONDING AGENT AND POUR SLOPED CONCRETE ACCESS PADS, TYP.

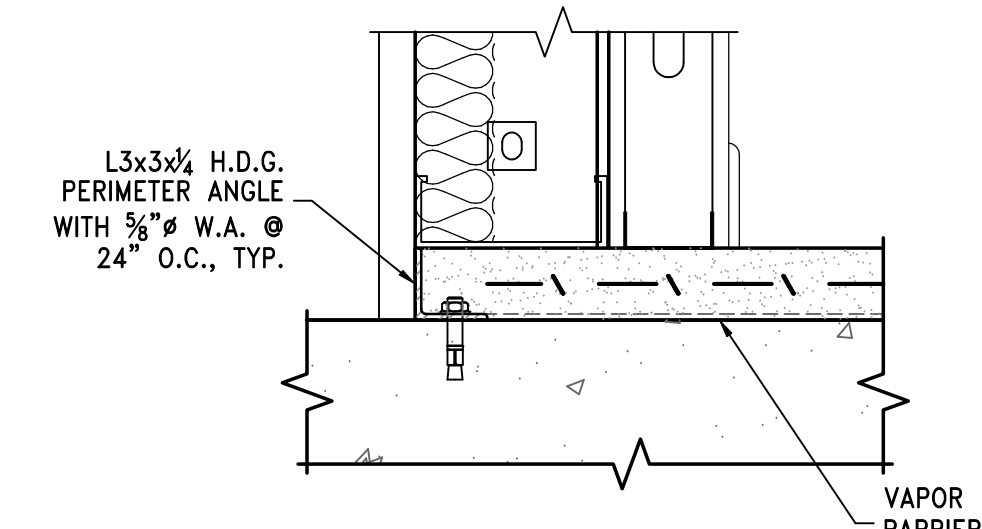
FOUNDATION PLAN
1/4"=1'-0"



SECTION A
1"=1'-0"



SECTION B
1"=1'-0"



DETAIL 1
1"=1'-0"

REV.	DESCRIPTION	DATE	BY	CHK'D
A	ISSUED FOR BID	04/24/26	CMG	JDG

11880 Cranston Drive, Ste. 101
Arlington, Tennessee 38002
(901) 290-5444



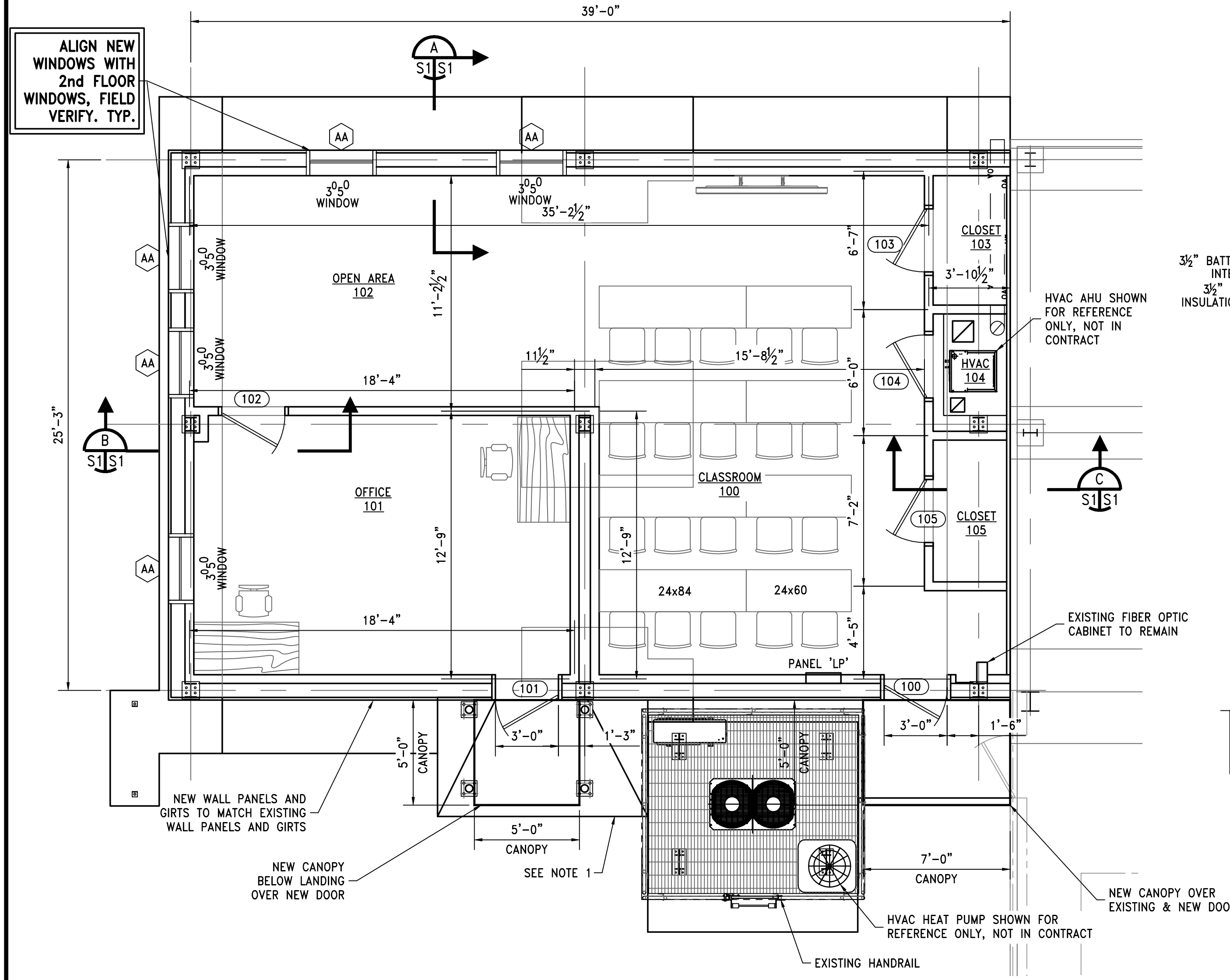
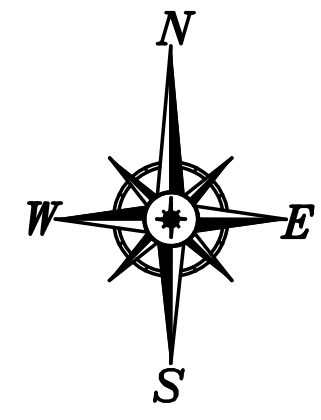
457 St. Michael Street
Mobile, Alabama 36602
(251) 433-1611

PROJECT
TERMINAL RAILROAD TRAINING CENTER
126 INDUSTRIAL CANAL ROAD
MOBILE, ALABAMA

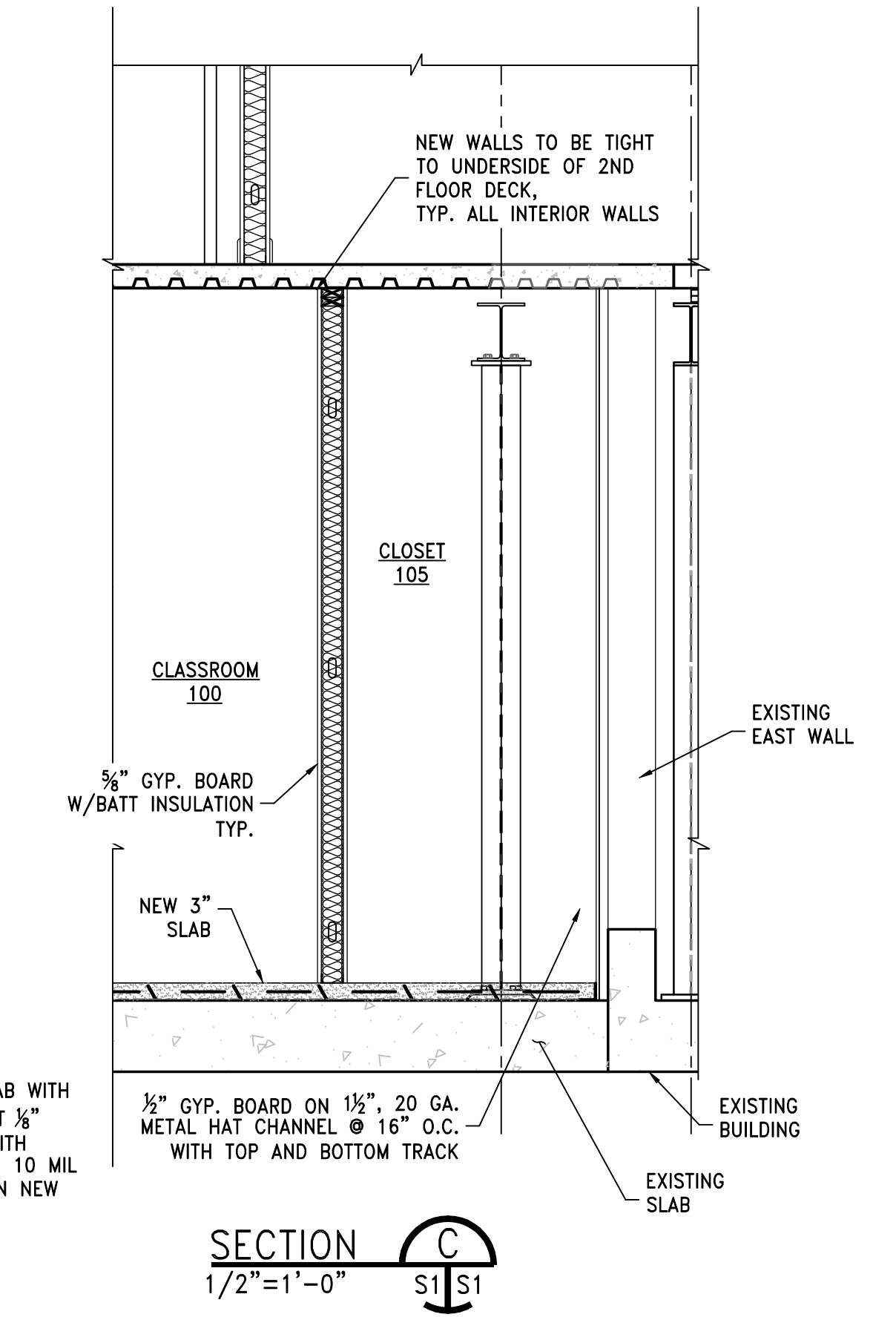
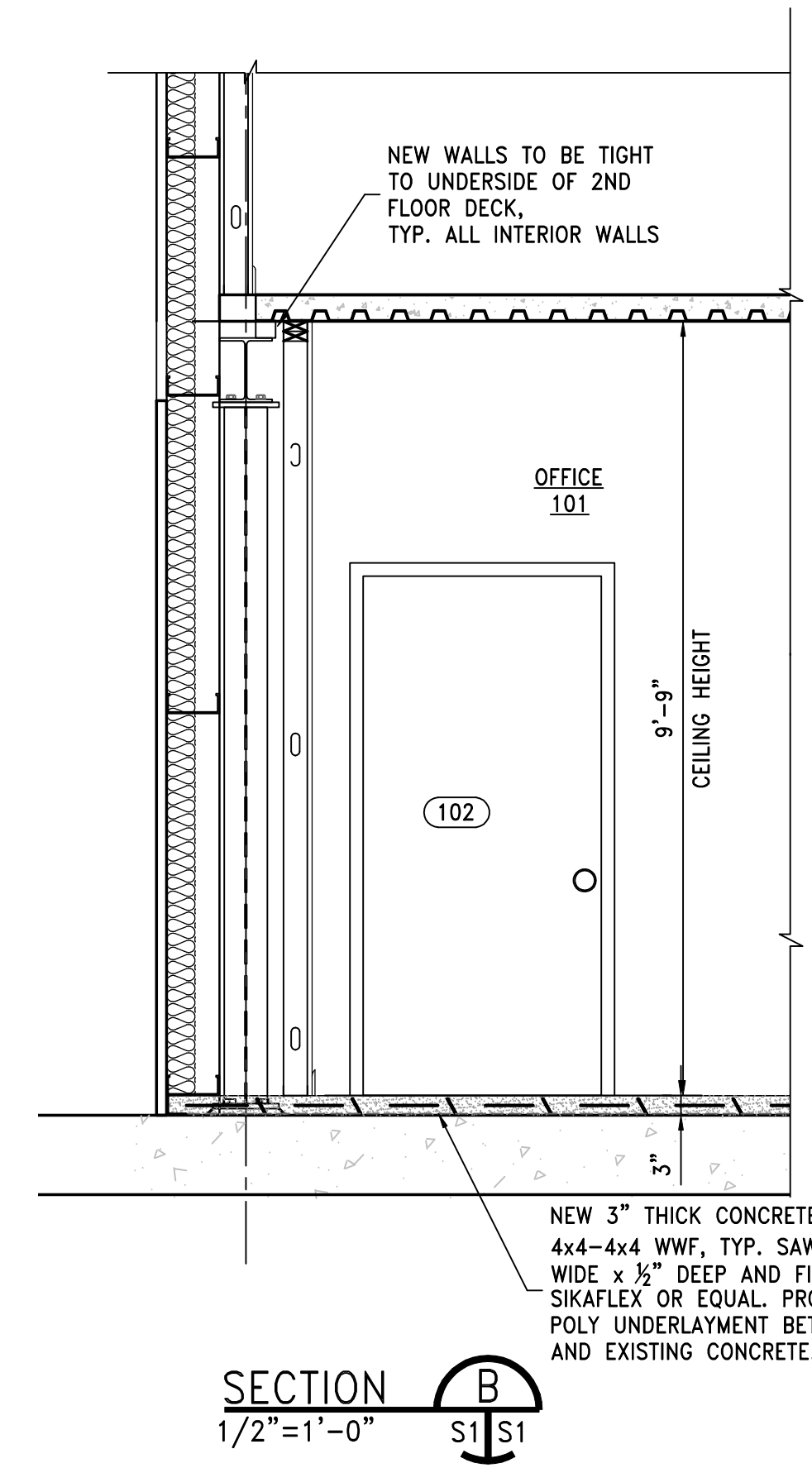
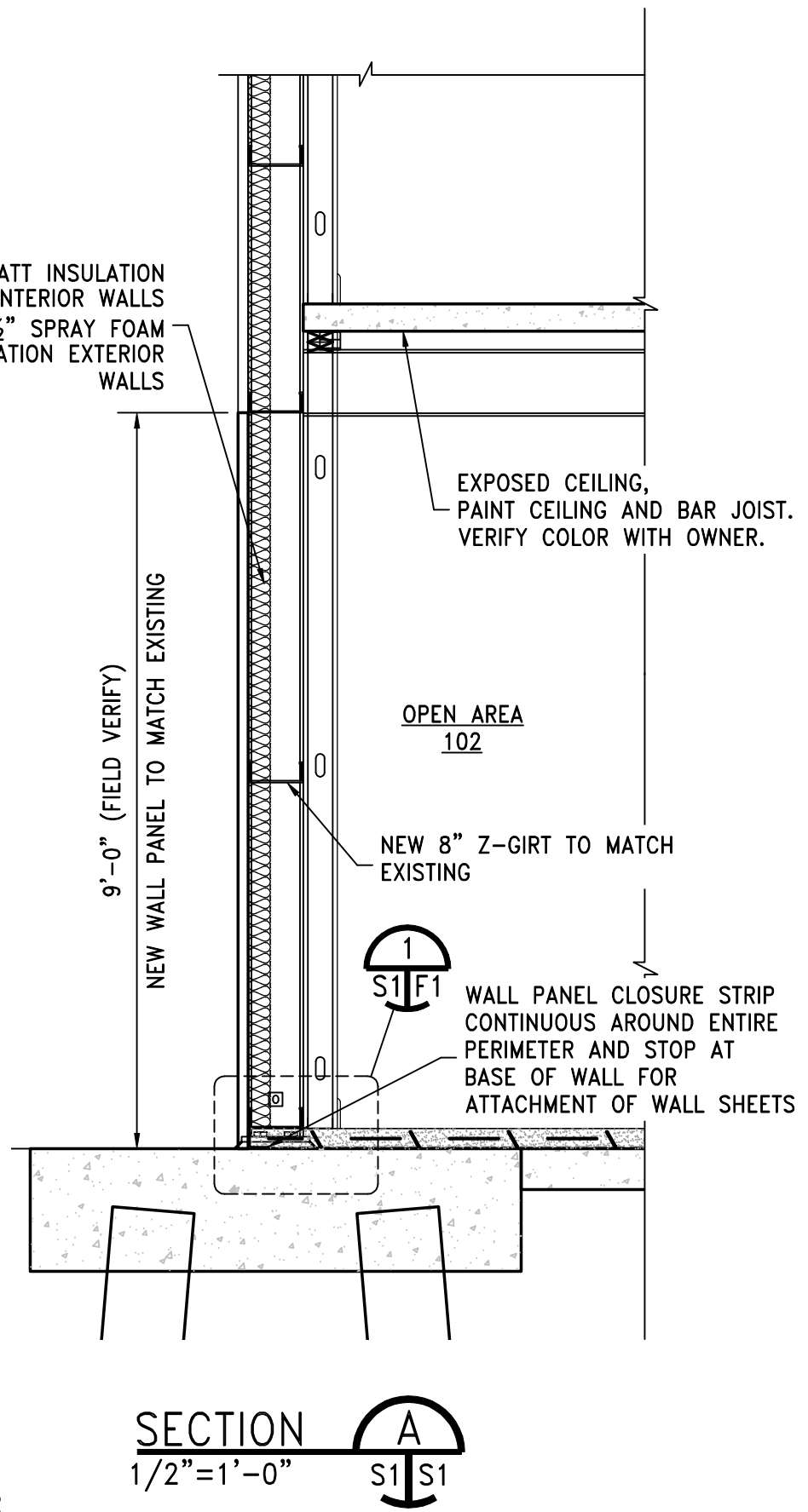


TITLE	
FOUNDATION MODIFICATION PLAN	
DATE	11/4/25
DRAWING NUMBER	4735-F1

© CMG ENGINEERS, INC. 2026 - CONFIDENTIAL, VALUABLE, AND PROPRIETARY INFORMATION



- NOTES:**
- SEE DRAWING F1 FOR DETAILS AT DOOR ACCESS PADS.
 - SEE F1 FOR SAWCUT DETAILS



REV.	DESCRIPTION	DATE	BY	CHK'D
A	ISSUED FOR BID	04/24/26	CMG	JDG

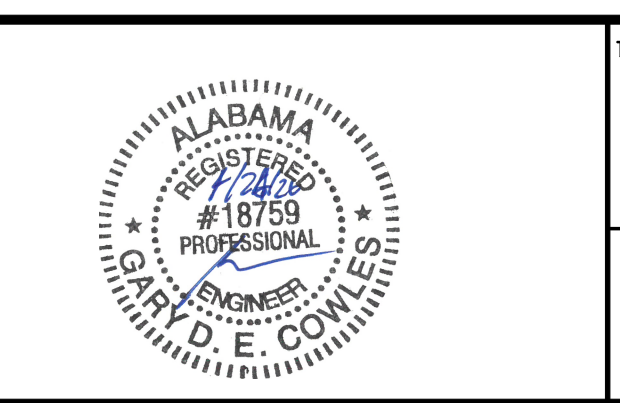
11880 Cranston Drive, Ste. 101
Arlington, Tennessee 38002
(901) 290-5444

457 St. Michael Street
Mobile, Alabama 36602
(251) 433-1611

PROJECT

TERMINAL RAILROAD TRAINING CENTER

126 INDUSTRIAL CANAL ROAD
MOBILE, ALABAMA

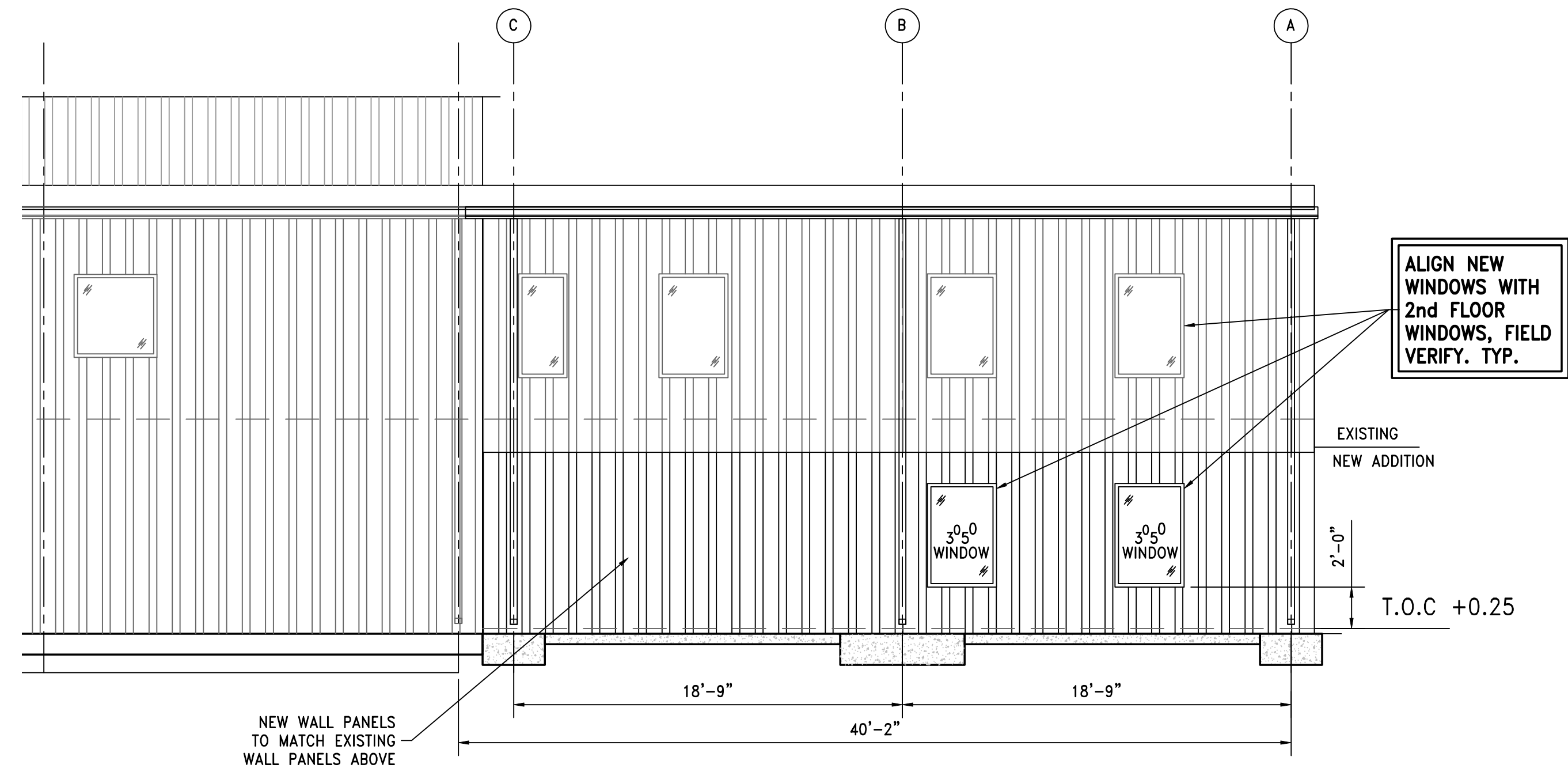


TITLE

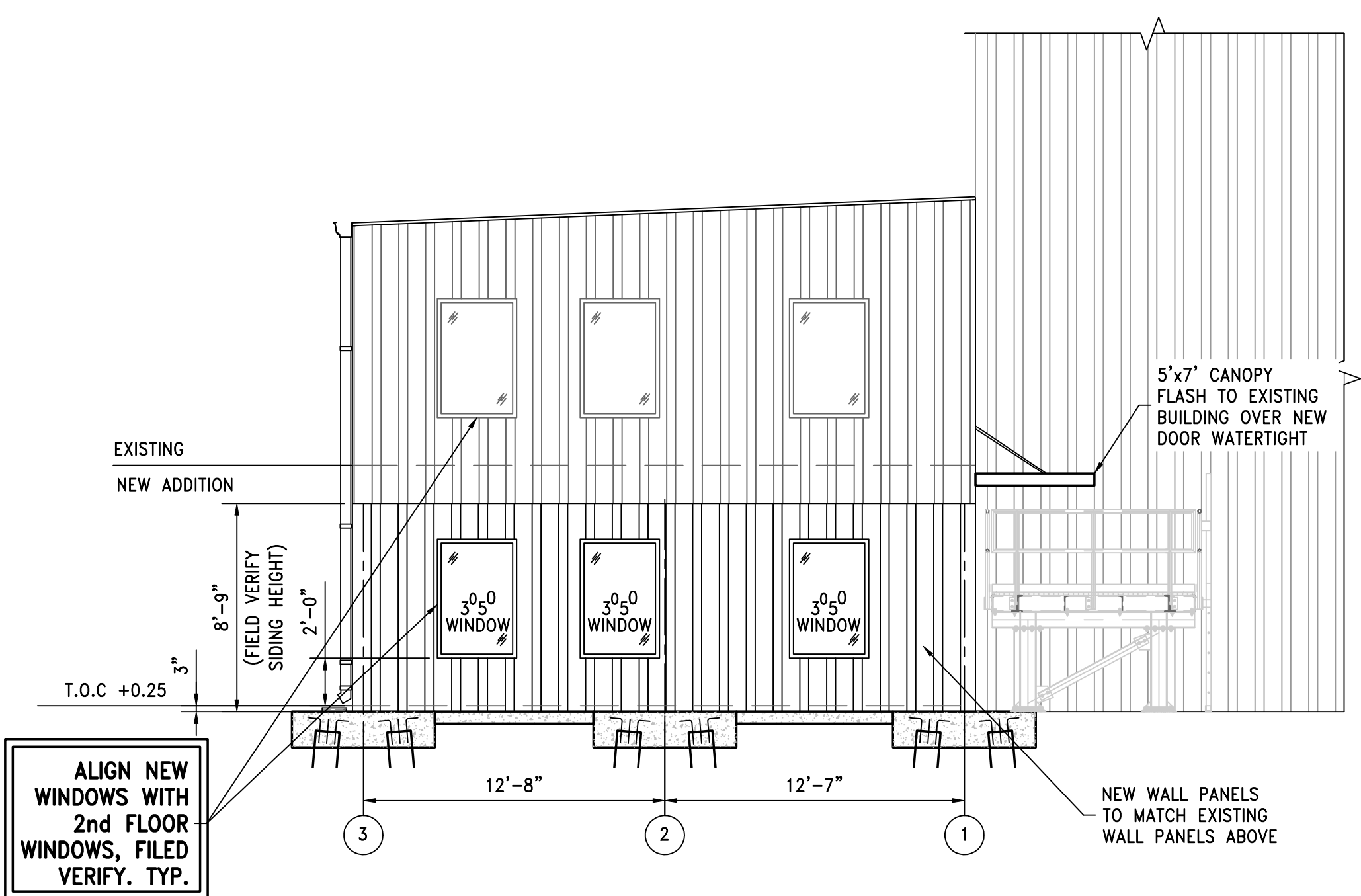
FLOOR PLAN

DATE	11/4/25	22x34 REV.	A
DRAWING NUMBER	4735-S1		

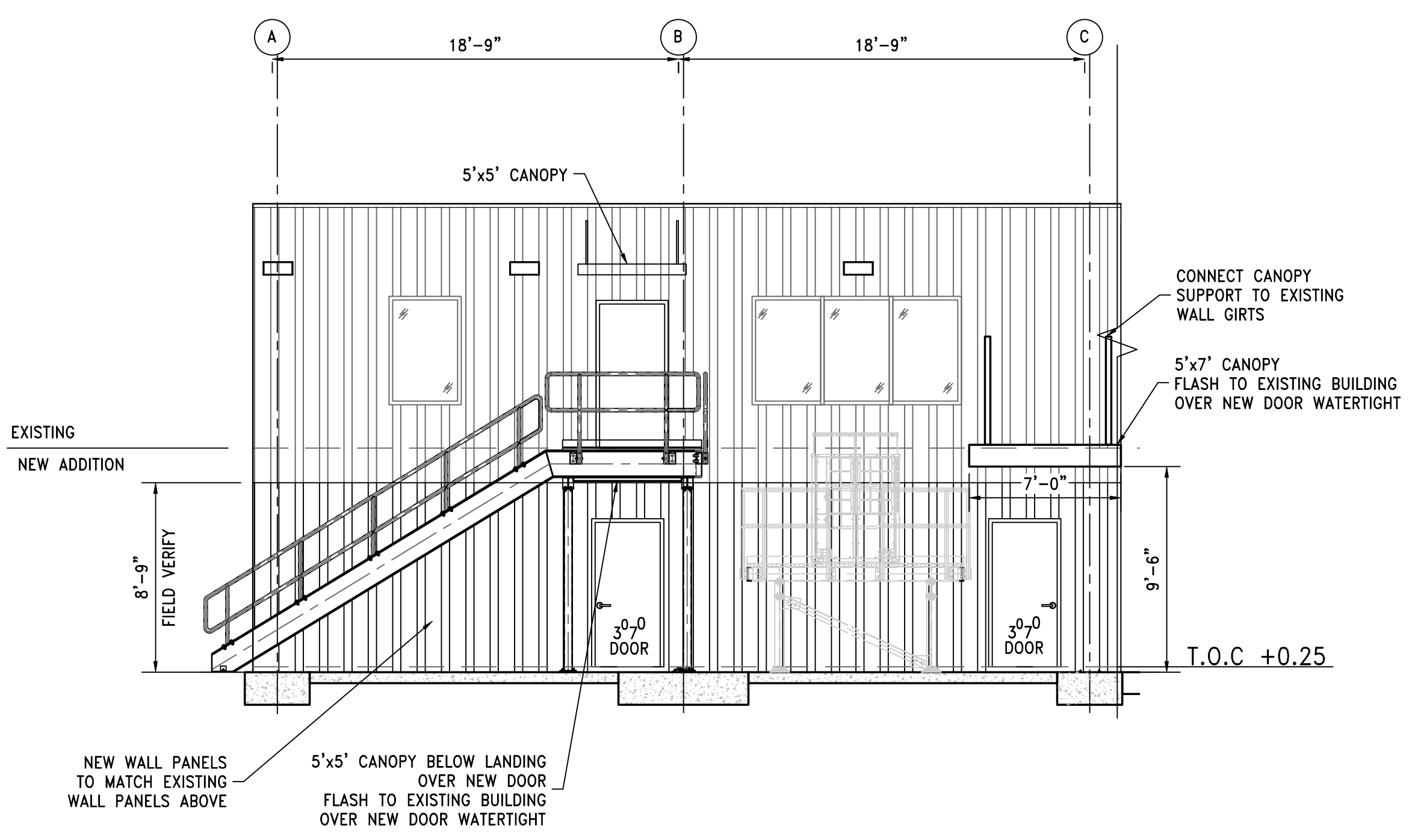
© CMG ENGINEERS, INC. 2026 - CONFIDENTIAL, VALUABLE, AND PROPRIETARY INFORMATION



NORTH ELEVATION
3/16"=1'-0"



WEST ELEVATION
3/16"=1'-0"



SOUTH ELEVATION
3/16"=1'-0"

REV.	DESCRIPTION	DATE	BY	CHK'D
A	ISSUED FOR BID	04/24/26	CMG	JDG

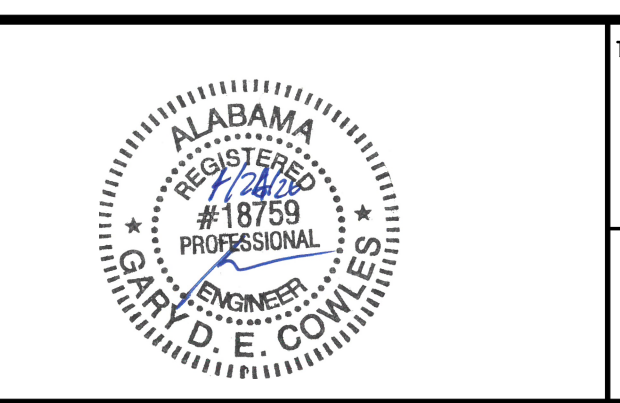
11880 Cranston Drive, Ste. 101
Arlington, Tennessee 38002
(901) 290-5444

457 St. Michael Street
Mobile, Alabama 36602
(251) 433-1611

PROJECT

TERMINAL RAILROAD
TRAINING CENTER

126 INDUSTRIAL CANAL ROAD
MOBILE, ALABAMA



TITLE

EXTERIOR ELEVATIONS

© CMG ENGINEERS, INC. 2026 -
CONFIDENTIAL, VALUABLE, AND
PROPRIETARY INFORMATION

DATE 11/4/25
DRAWING NUMBER 4735-S2

ROOM FINISH SCHEDULE										
ROOM	FLOOR	BASE	WALL				CEILING		REMARKS	
			N	S	E	W	MAT'L	HEIGHT		
100	CLASSROOM	VCT	VB	2	2	1	1	EXP	10'	
101	OFFICE 1	VCT	VB	1	2	1	2	EXP	10'	
102	OPEN AREA	VCT	VB	2	1	-	2	EXP	10'	
103	CLOSET	VCT	VB	2	1	3	1	EXP	10'	
104	HVAC	VCT	VB	1	1	3	1	EXP	10'	
103	CLOSET	VCT	VB	1	2	3	1	EXP	10'	

**ROOM FINISH SCHEDULE
KEY NOTES**

WALLS:

- 3/8" METAL STUD WALL FRAMING WITH 5/8" PAINTED GYPSUM WITH 3/2" BATT INSULATION
- 3/8" METAL STUD WALL FRAMING WITH 5/8" PAINTED GYPSUM WITH SPRAY FOAM INSULATION

FLOORING:

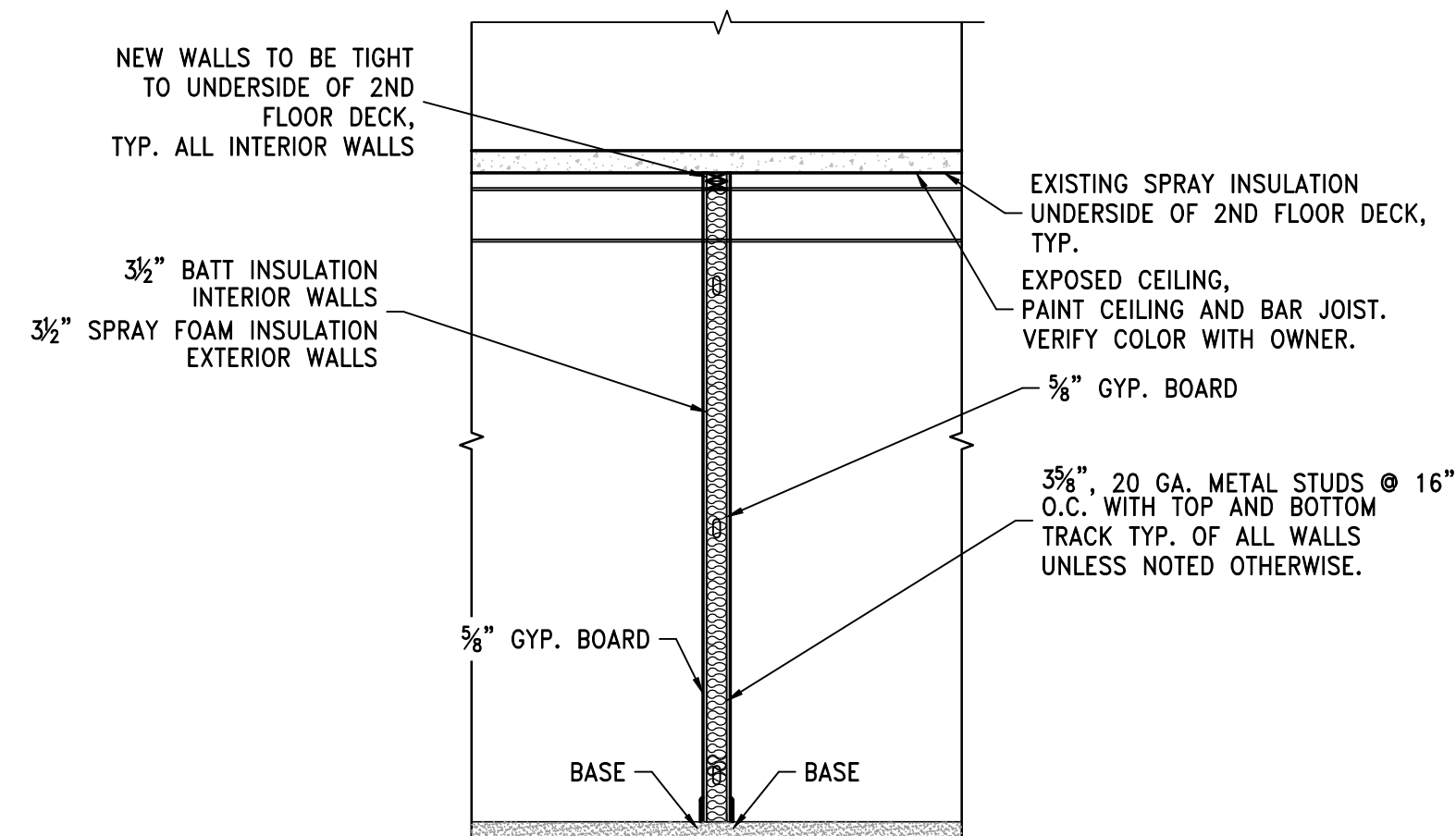
PC POLISHED CONCRETE, STAINED AND SEALED. VERIFY STAIN COLOR WITH OWNER

CEILING:

EXP PAINT EXPOSED CEILING, BLACK. VERIFY COLOR WITH OWNER.

BASE:

VB VINYL BASE

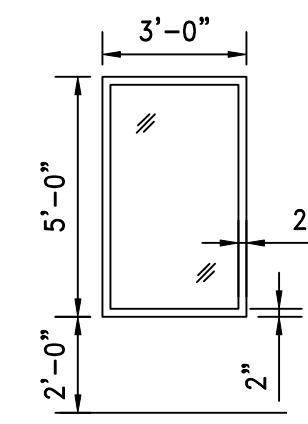


TYPICAL INTERIOR WALL SECTION
3/8"=1'-0"

DOOR #	RATING	DOOR SIZE	DOOR MATERIAL	FRAME MATERIAL	HARDWARE	REMARKS
100	NONE	3'-0" x 7'-0"	METAL DOOR WITH POLY CORE	METAL	ENTRY LOCKSET W/ DEADBOLT, DOOR CLOSER, 1/2 PAIR S.S. BUTT HINGES, VINYL DOOR SEAL, NEOPRENE SWEEP, SADDLE THRESHOLD	CT/IR GLASS-SEE DOOR TYPE "A"
101	NONE	3'-0" x 7'-0"	METAL DOOR WITH POLY CORE	METAL	ENTRY LOCKSET W/ DEADBOLT, DOOR CLOSER, 1/2 PAIR S.S. BUTT HINGES, VINYL DOOR SEAL, NEOPRENE SWEEP, SADDLE THRESHOLD	CT/IR GLASS-SEE DOOR TYPE "A"
102	NONE	3'-0" x 7'-0"	SCWD	METAL	ENTRY KEYED LOCK SET, 1/2 PAIR S.S. BUTT HINGES	CT GLASS-SEE DOOR TYPE "B"
103	NONE	3'-0" x 7'-0"	SCWD	METAL	ENTRY KEYED LOCK SET, 1/2 PAIR S.S. BUTT HINGES	SEE DOOR TYPE "C"
104	NONE	3'-0" x 7'-0"	SCWD	METAL	PASSAGE LOCK SET, 1/2 PAIR S.S. BUTT HINGES	SEE DOOR TYPE "C"
105	NONE	3'-0" x 7'-0"	SCWD	METAL	ENTRY KEYED LOCK SET, 1/2 PAIR S.S. BUTT HINGES	SEE DOOR TYPE "C"

NOTE:

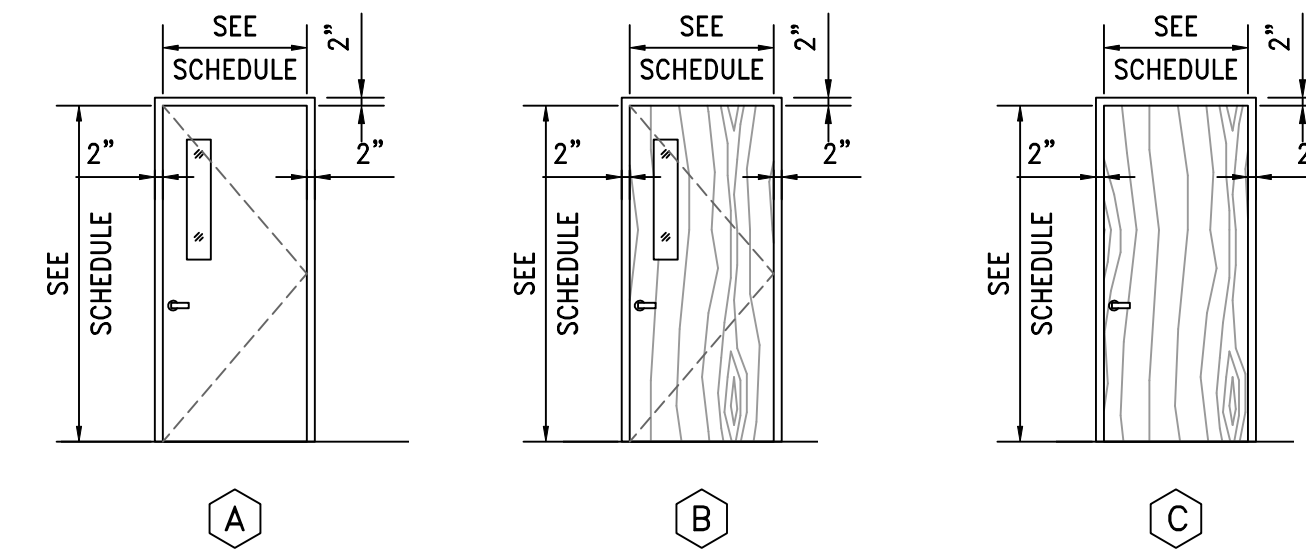
-ALL EXTERIOR GLASS TO BE CLEAR TEMPERED, IMPACT RESISTANT, MEETING WIND REQUIREMENT OF 161 MPH.
-ALL EXTERIOR DOORS SHALL BE AIR TIGHT AND WEATHER TIGHT. (DOORS SHALL PERMIT LESS THAN 0.01 CU.FT./MIN. OF OUTSIDE AIR)



STOREFRONT KAWNEER IR 501
CLEAR INSULATED-LOW-E #2
HURRICANE RESISTANT GLAZING

WINDOW SCHEDULE NOTES:

- CLEAR TEMPERED
- IMPACT RESISTANT: 161 WIND REQUIREMENT MIN.
- VINYL FRAME FIXED
- U-FACTOR: 0.35
- SHGC: 0.27



HOLLOW METAL DOOR WITH
POLYSTYRENE CORE AND IR
TOP WINDOW (6"W x 30"H)

SOLID CORE WOOD
DOOR CT TOP WINDOW
(6"W x 30"H)

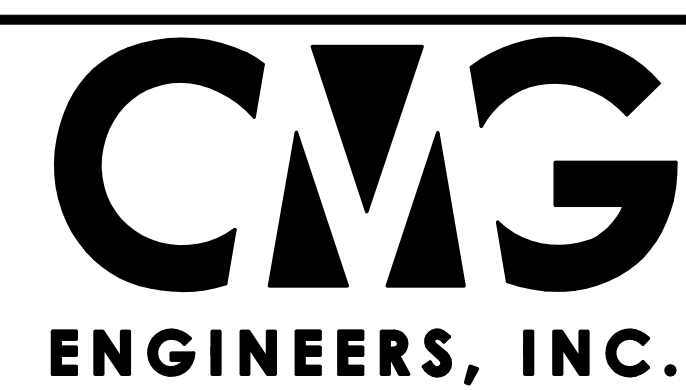
SOLID CORE
WOOD DOOR

DOOR SCHEDULE NOTES:

- GENERAL: PROVIDE WALL BUMPERS FOR ALL DOORS.
- SCWD = SOLID CORE WOOD DOOR
 - WOOD DOORS TO HAVE HOLLOW METAL FRAME
 - WOOD DOORS TO BE ROTARY NATURAL BIRCH, FACTORY PRE-FINISHED, STANDARD COLOR STAINED.
 - NL = NIGHTLATCH
 - SS = STAINLESS STEEL
 - ALL DOORS NOT TYPE A TO BE FLUSH, UNLESS NOTED OTHERWISE.
 - IR = IMPACT RESISTANT
CT = CLEAR TEMPERED

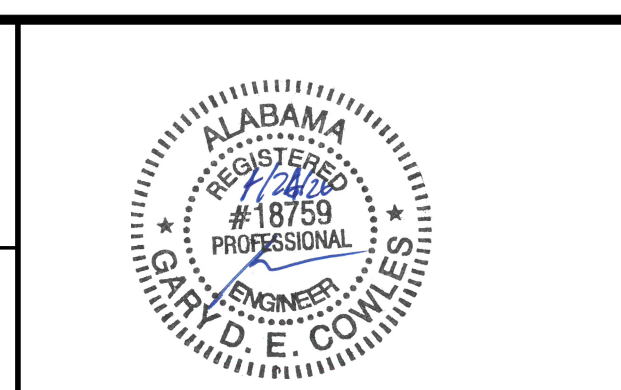
REV.	DESCRIPTION	DATE	BY	CHK'D
A	ISSUED FOR BID	04/24/26	CMG	JDG

11880 Cranston Drive, Ste. 101
Arlington, Tennessee 38002
(901) 290-5444

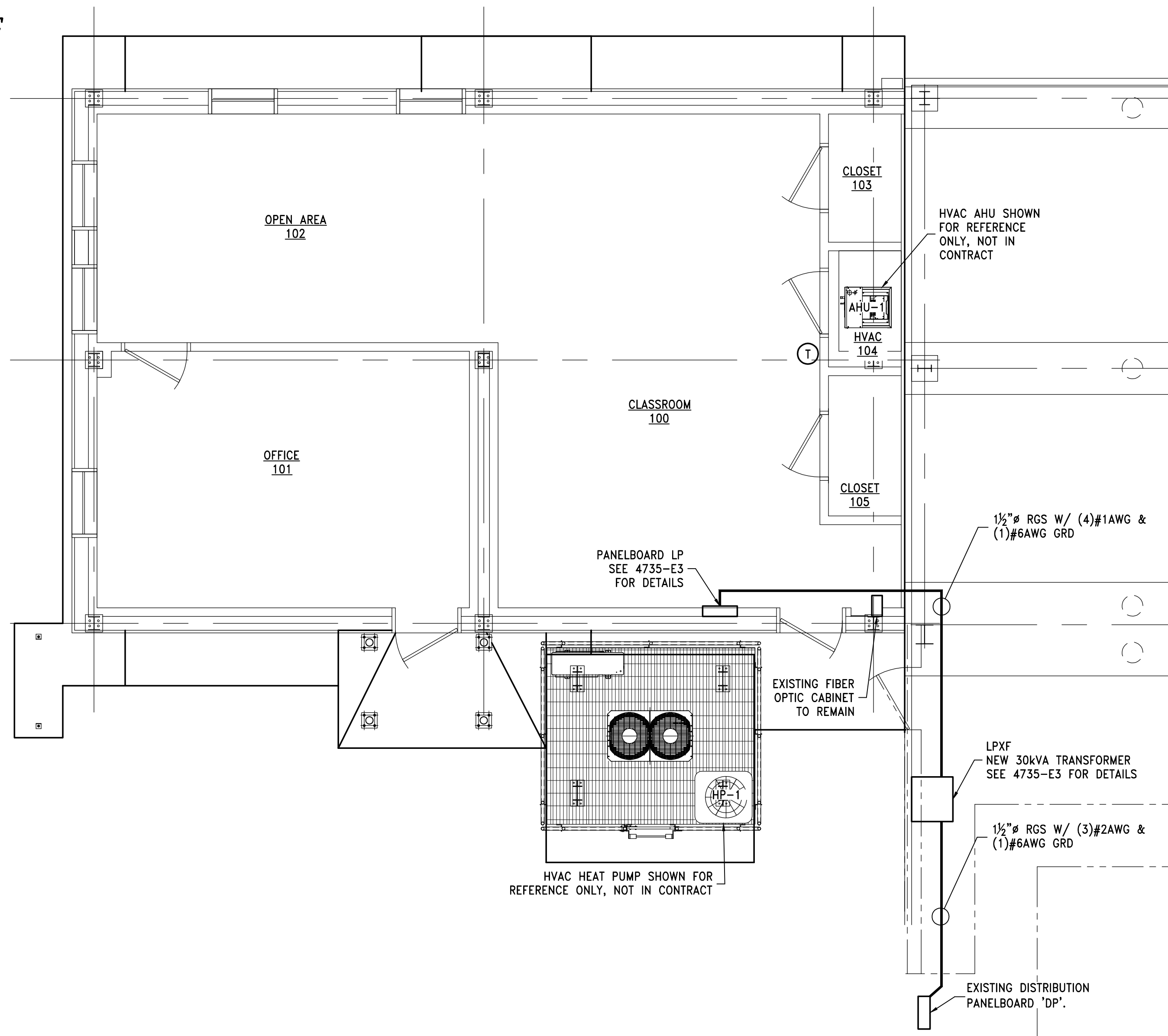
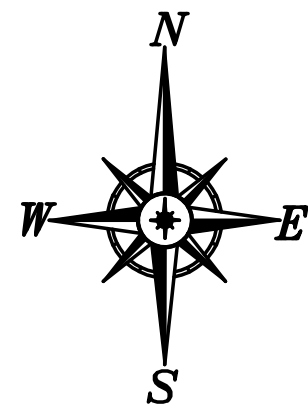


457 St. Michael Street
Mobile, Alabama 36602
(251) 433-1611

PROJECT
**TERMINAL RAILROAD
TRAINING CENTER**
126 INDUSTRIAL CANAL ROAD
MOBILE, ALABAMA



TITLE	
DOOR AND WINDOW SCHEDULE	
<small>© CMG ENGINEERS, INC. 2026 - CONFIDENTIAL, VALUABLE, AND PROPRIETARY INFORMATION</small>	<small>DATE</small> 11/4/25 <small>22x34</small> REV. A <small>DRAWING NUMBER</small> 4735-S3



ELECTRICAL SITE PLAN
1/4"=1'-0"

ELECTRICAL NOTES:

1. ALL ELECTRICAL WORK SHALL BE INSTALLED AS REQUIRED BY THE LATEST APPLICABLE VERSION OF THE NATIONAL ELECTRIC CODE (N.E.C.) AND ANY STATE, CITY AND/OR LOCAL CODE REQUIREMENTS. THE MORE STRINGENT CODE REQUIREMENT SHALL BE UTILIZED AND VERIFIED WITH THE LOCAL INSPECTION APPROVAL AGENCY. (DEFINITION "CODE" - STATE, CITY AND/OR LOCAL CODE REQUIREMENTS)
2. CONTRACTOR SHALL INSTALL ALL GROUNDING AS REQUIRED BY THE LATEST APPLICABLE VERSION OF THE NATIONAL ELECTRIC CODE (N.E.C.) AND ANY STATE, CITY AND/OR LOCAL CODE REQUIREMENTS. THE MORE STRINGENT CODE REQUIREMENT SHALL BE UTILIZED AND VERIFIED WITH THE LOCAL INSPECTION APPROVAL AGENCY.
3. CONTRACTOR SHALL (PRIOR TO BID)
 - (a) VISIT THE JOB/CONSTRUCTION SITE AND FIELD VERIFY ALL EXISTING CONDITIONS
 - (b) TAKE ALL CONSIDERATIONS INTO ACCOUNT AT THE TIME OF BID. NO CONSIDERATIONS WILL BE GRANTED TO THE CONTRACTOR AFTER THE BID HAS BEEN ACCEPTED.
4. ALL ELECTRICAL METALLIC TUBING (EMT), RIGID NON-METALLIC CONDUIT, FLEXIBLE METALLIC CONDUIT, FLEXIBLE NON-METALLIC CONDUIT, 'SEALTIGHT' TYPE CONDUITS AND ALL OTHER CONDUITS THAT DO NOT CONTAIN A REQUIRED CODE SIZED GROUND WIRE SHALL HAVE A REQUIRED CODE SIZED BOND WIRE INSTALLED WITH THE CIRCUIT CONDUCTORS.
5. CONTRACTOR SHALL FURNISH AND INSTALL NEW CIRCUIT BREAKER (90A, 3P) IN EXISTING DISTRIBUTION PANELBOARD 'DP' FOR THE NEW 30 KVA TRANSFORMER, LPXF, AND ROUTE 1 1/2" RGS W/(3)#2AWG & (1)#6AWG GRD FROM EXISTING DISTRIBUTION PANELBOARD DP TO NEW TRANSFORMER, LPXF, AND 1 1/2" RGS W/(4)#1AWG & (1)#6AWG GRD FROM NEW TRANSFORMER, LPXF, TO NEW DISTRIBUTION PANELBOARD LP.

PANELBOARD SCHEDULE (277/480V 3Ø, 4W)

MARK: SERVICE PANEL "DP"																					
CKT #	LOAD DESCRIPTION	BREAKER P	TRIP	FEEDER FEED	CONDUIT GRD	CONDUIT SIZE	PHASE (kVA)			PHASE (kVA)			FEEDER/CONDUIT BREAKER			LOAD DESCRIPTION	CKT #				
							A	B	C	A	B	C	FEED	GRD	SIZE			P	TRIP		
1	75kVA						25.0	25.0		10.0							2				
3	480V-120/208V SECOND FLOOR TRANSFORMER	3	150	2/0	4	2"				10.0		10.0		3	6	1 1/2	3	90	NEW 30 KVA TRANSFORMER	4	
5												25.0								6	
7	SPACE	-	-	-	-	-	-	-	-	-	-	-	-	-	-	-	-	-	-	SPACE	8
9	SPACE	-	-	-	-	-	-	-	-	-	-	-	-	-	-	-	-	-	-	SPACE	10
11	SPACE	-	-	-	-	-	-	-	-	-	-	-	-	-	-	-	-	-	-	SPACE	12
13	SPACE	-	-	-	-	-	-	-	-	-	-	-	-	-	-	-	-	-	-	SPACE	14
15	SPACE	-	-	-	-	-	-	-	-	-	-	-	-	-	-	-	-	-	-	SPACE	16
17	SPACE	-	-	-	-	-	-	-	-	-	-	-	-	-	-	-	-	-	-	SPACE	18
							25.0	25.0	25.0	10.0	10.0	10.0									
							TOTAL (kVA) #A 35.00			#B 35.00			#C 35.00			HIGH PHASE (AMPS) 126.4					
							TOTAL CONNECTED LOAD (kVA) 105.0									TOTAL LOAD (AMPS) 126.3					

REV.	DESCRIPTION	DATE	BY	CHK'D
A	ISSUED FOR BID	04/24/26	WES	JJM

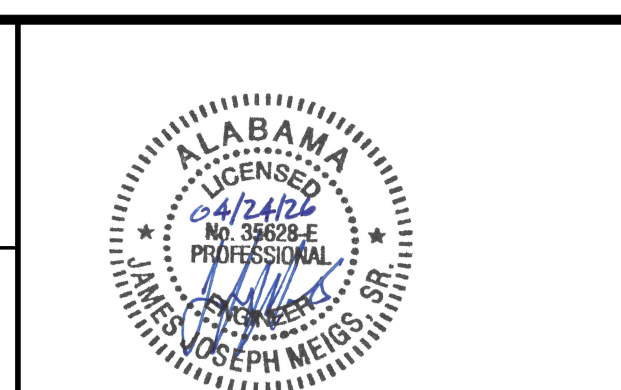
11880 Cranston Drive, Ste. 101
Arlington, Tennessee 38002
(901) 290-5444

457 St. Michael Street
Mobile, Alabama 36602
(251) 433-1611

PROJECT

TERMINAL RAILROAD TRAINING CENTER

126 INDUSTRIAL CANAL ROAD
MOBILE, ALABAMA



TITLE

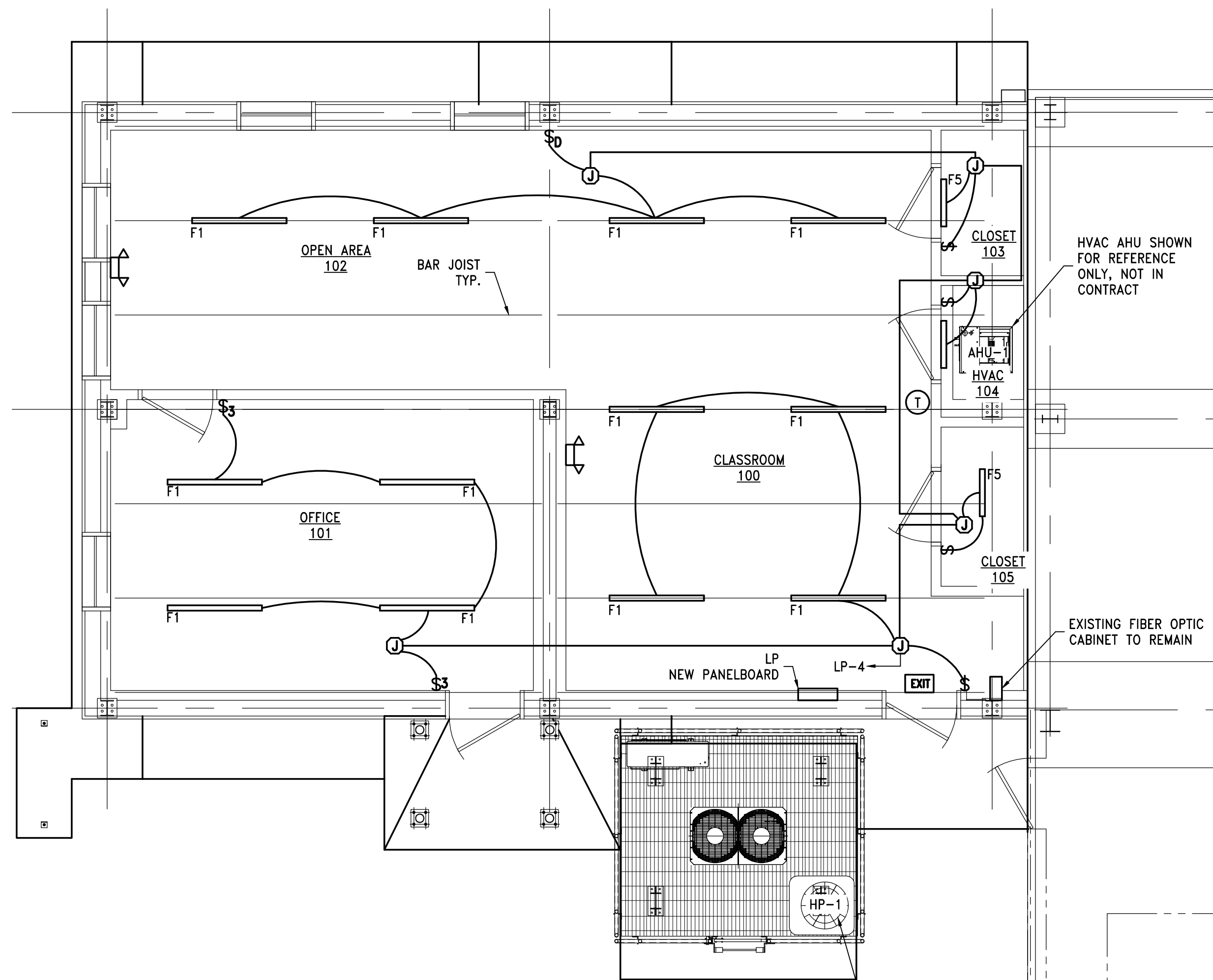
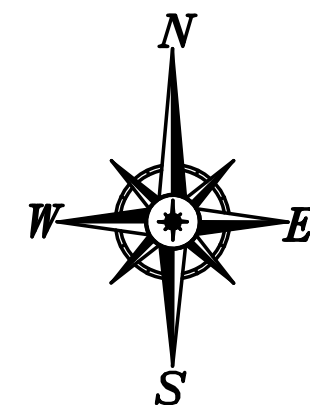
ELECTRICAL SITE PLAN

© CMG ENGINEERS, INC. 2026 - CONFIDENTIAL, VALUABLE, AND PROPRIETARY INFORMATION

DATE 01/14/26

DRAWING NUMBER 4735-E1

22x34 REV. A



LIGHTING FLOOR PLAN
1/4"=1'-0"

HVAC HEAT PUMP SHOWN FOR REFERENCE ONLY, NOT IN CONTRACT

ELECTRICAL NOTES:

- ALL ELECTRICAL WORK SHALL BE INSTALLED AS REQUIRED BY THE LATEST APPLICABLE VERSION OF THE NATIONAL ELECTRIC CODE (N.E.C.) AND ANY STATE, CITY AND/OR LOCAL CODE REQUIREMENTS. THE MORE STRINGENT CODE REQUIREMENT SHALL BE UTILIZED AND VERIFIED WITH THE LOCAL INSPECTION APPROVAL AGENCY. (DEFINITION "CODE" - STATE, CITY AND/OR LOCAL CODE REQUIREMENTS)
- CONTRACTOR SHALL INSTALL ALL GROUNDING AS REQUIRED BY THE LATEST APPLICABLE VERSION OF THE NATIONAL ELECTRIC CODE (N.E.C.) AND ANY STATE, CITY AND/OR LOCAL CODE REQUIREMENTS. THE MORE STRINGENT CODE REQUIREMENT SHALL BE UTILIZED AND VERIFIED WITH THE LOCAL INSPECTION APPROVAL AGENCY.
- CONTRACTOR SHALL (PRIOR TO BID)
 - VISIT THE JOB/CONSTRUCTION SITE AND FIELD VERIFY ALL EXISTING CONDITIONS
 - TAKE ALL CONSIDERATIONS INTO ACCOUNT AT THE TIME OF BID. NO CONSIDERATIONS WILL BE GRANTED TO THE CONTRACTOR AFTER THE BID HAS BEEN ACCEPTED.
- ALL LIGHT FIXTURES SHOWN/LISTED IN LIGHTING FIXTURE SCHEDULE SHALL BE 10-DAY PRE-APPROVED BY THE ENGINEER PRIOR TO BID.**
- ALL ELECTRICAL SWITCHES SHALL BE INSTALLED AS PER N.E.C. ARTICLE 404 AND AS REQUIRED BY CODE. LIGHT SWITCHES AND COVERS SHALL BE WHITE UNLESS NOTED OTHERWISE BY THE ARCHITECT.
- ALL ELECTRICAL METALLIC TUBING (EMT), RIGID NON-METALLIC CONDUIT, FLEXIBLE METALLIC CONDUIT, FLEXIBLE NON-METALLIC CONDUIT, 'SEALTIGHT' TYPE CONDUITS AND ALL OTHER CONDUITS THAT DO NOT CONTAIN A REQUIRED CODE SIZED GROUND WIRE SHALL HAVE A REQUIRED CODE SIZED BOND WIRE INSTALLED WITH THE CIRCUIT CONDUCTORS.
- CONTRACTOR SHALL FURNISH AND INSTALL WEATHER PROOF G.F.C.I. RECEPTACLE AT AN ACCESSIBLE LOCATION NEAR ALL HVAC EQUIPMENT IN ACCORDANCE WITH N.E.C. ARTICLE 210.63 AND AS REQUIRED BY CODE. CONTRACTOR IS RESPONSIBLE FOR THE COORDINATION OF THESE RECEPTACLES IN THE FIELD REGARDLESS OF THE PLAN LAYOUT.
- CONTRACTOR SHALL REMOVE EXISTING LIGHTS IN AREA OF THE NEW CONSTRUCTION AND DISPOSE OF THEM AS DIRECTED BY OWNER.

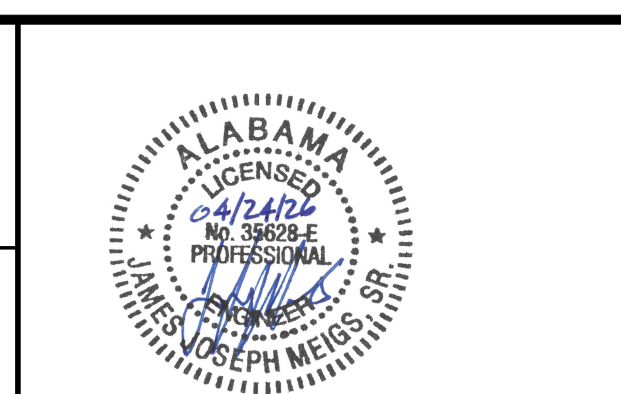
ELECTRICAL SYMBOL LEGEND	
SYMBOL	DESCRIPTION
F1	ORION, HARRIS MULTIPURPOSE LINEAR, GEN 2 #MPHL2406LUNVFDXX850LAFG-HW-FC009, 38W, 6000LUMENS, OR ENGINEER APPROVED.
F5	METALUX #28CLED-LD4-28HL-F-UNV-L840-CD1, WALL MOUNT BRACKET LED FIXTURE, 2,825 LUMENS (25W) OR ENGINEER APPROVED EQUAL.
J	JUNCTION BOX WITH COVER
⏏	EMERGENCY LIGHTING FIXTURE UNIT WITH BATTERY PACK. MOUNTED 12" BELOW CEILING UNLESS NOTED OTHERWISE. COPPER SURELITE #CC7NC MRTSD
EXIT	BACKLIT EXIT SIGN WITH EMERGENCY LAMPS AND BATTERY BACKUP. MOUNT OVER DOOR. COPPER SURELITE #AP70R.
\$	SINGLE POLE 120/277V, 20A ROCKER SWITCH - FLUSH WALL MOUNTED 48" A.F.F. UNLESS NOTED OTHERWISE. OWNER APPROVED. SWITCH DESIGNATION GIVEN (A)
\$D	SLIDE DIMMER SWITCH - FLUSH WALL MOUNTED 48" A.F.F. UNLESS NOTED OTHERWISE.
\$3	THREE WAY TOGGLE SWITCH - FLUSH WALL MOUNTED 48" A.F.F. UNLESS NOTED OTHERWISE.

REV.	DESCRIPTION	DATE	BY	CHK'D
A	ISSUED FOR BID	04/24/26	WES	JJM

11880 Cranston Drive, Ste. 101
Arlington, Tennessee 38002
(901) 290-5444

457 St. Michael Street
Mobile, Alabama 36602
(251) 433-1611

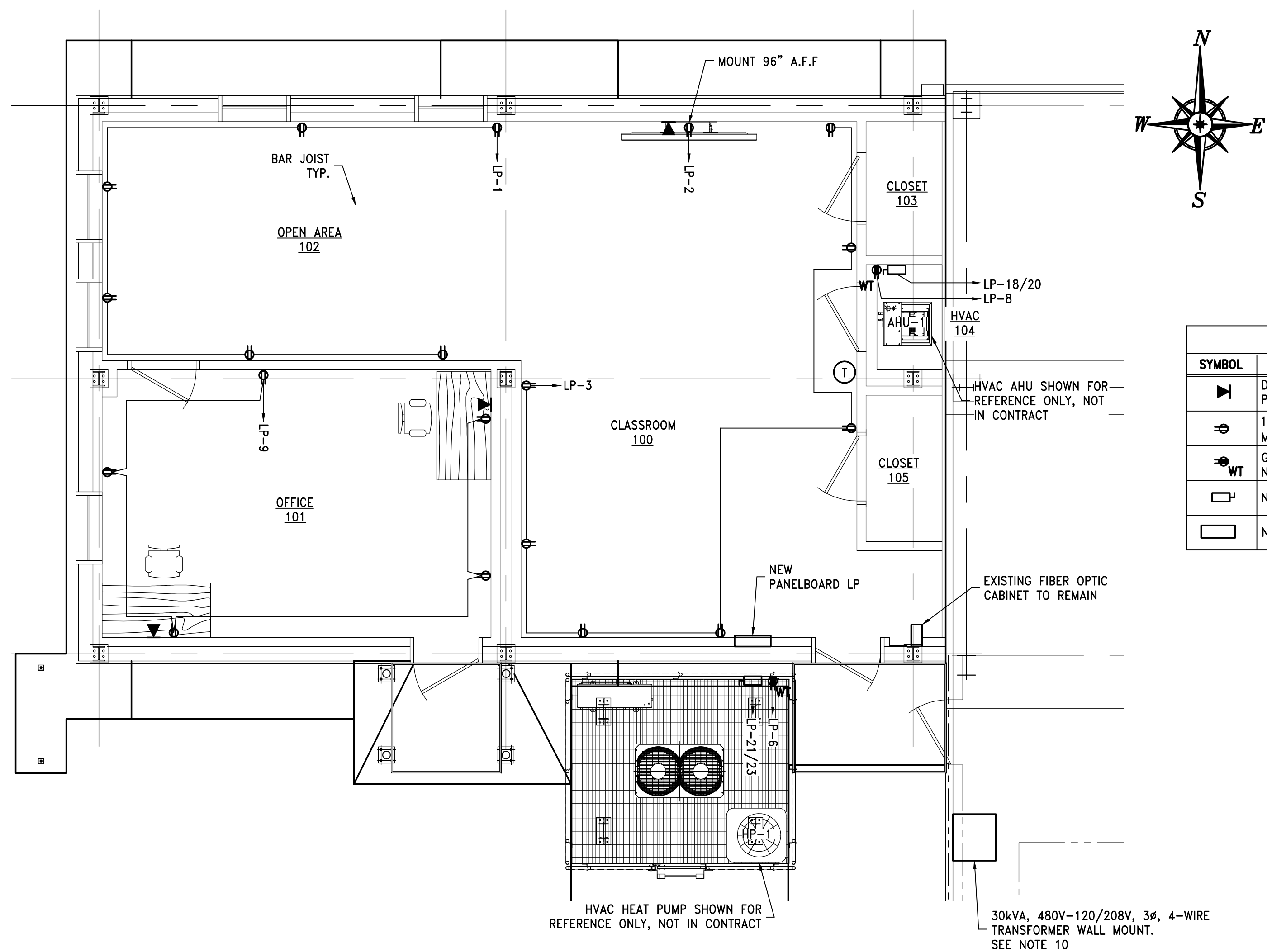
PROJECT
TERMINAL RAILROAD TRAINING CENTER
126 INDUSTRIAL CANAL ROAD
MOBILE, ALABAMA



TITLE
LIGHTING FLOOR PLAN

© CMG ENGINEERS, INC. 2026 - CONFIDENTIAL, VALUABLE, AND PROPRIETARY INFORMATION

DATE 01/14/26
DRAWING NUMBER 4735-E2
REV. A



ELECTRICAL SCHEDULE	
SYMBOL	DESCRIPTION
▶	DATA/TELEPHONE JACK DUPLEX J-BOX WITH CONDUIT TO OVERHEAD CEILING. PHONE CABLE BY OTHERS. INSTALL BLANK COVER PLATES.
⊕	110 VOLT GROUNDING TYPE, DUPLEX RECEPTACLE. FLUSH WALL MTD. 18" A.F.F. UNLESS NOTED OTHERWISE.
WT	GROUND FAULT DUPLEX RECEPTACLE. FLUSH WALL MTD. 42" A.F.F. UNLESS NOTED OTHERWISE. WT IS FOR WEATHER TIGHT ENCLOSURE WHERE APPLICABLE
□	NON-FUSED DISCONNECT SWITCH, NEMA-3R, SIZED AS REQUIRED
□	NEMA-1/3R DISTRIBUTION PANEL, SEE SCHEDULE

ELECTRICAL PLAN
1/4"=1'-0"

ELECTRICAL NOTES:

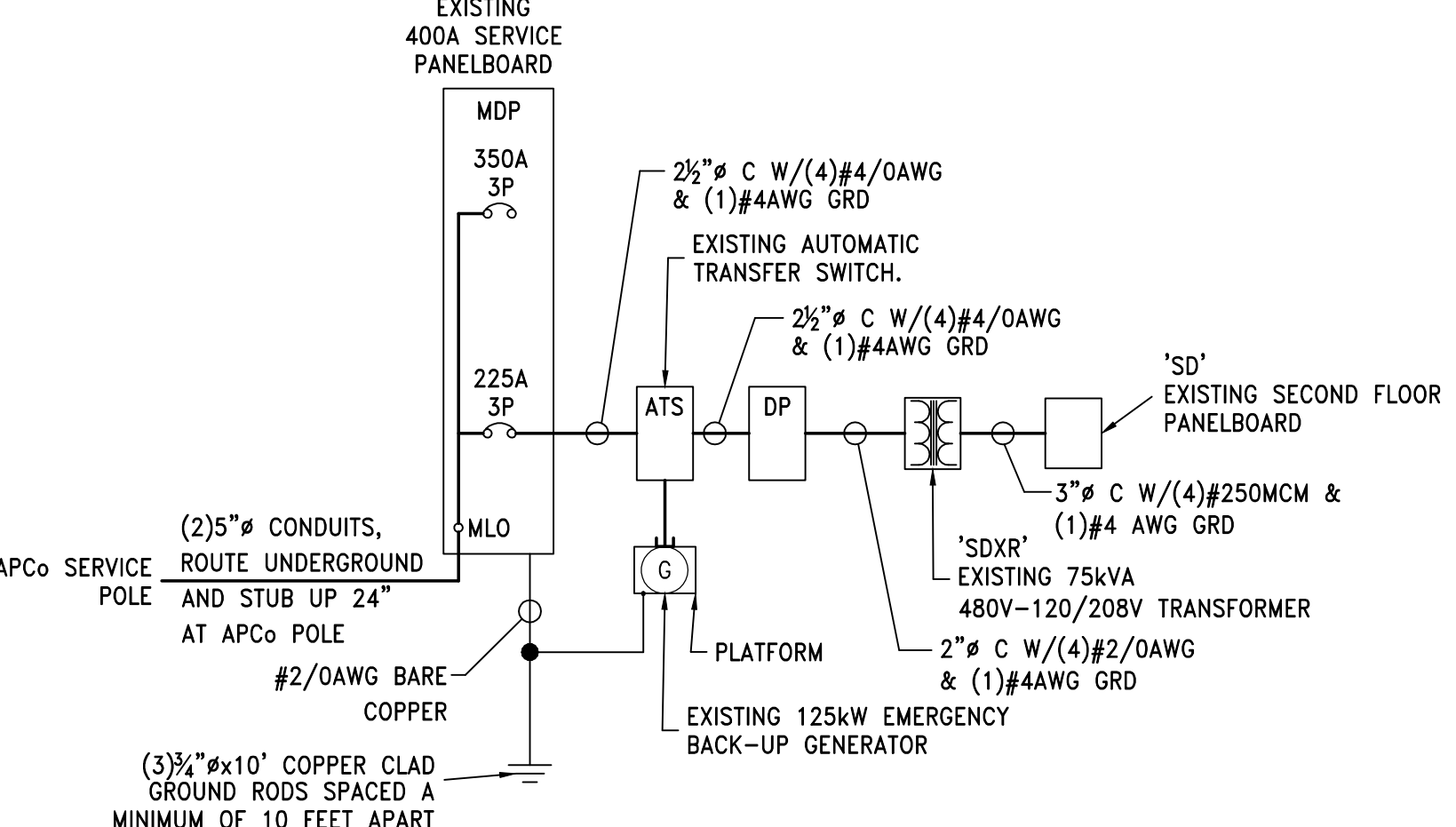
- ALL ELECTRICAL WORK SHALL BE INSTALLED AS REQUIRED BY THE LATEST APPLICABLE VERSION OF THE NATIONAL ELECTRIC CODE (N.E.C.) AND ANY STATE, CITY AND/OR LOCAL CODE REQUIREMENTS. THE MORE STRINGENT CODE REQUIREMENT SHALL BE UTILIZED AND VERIFIED WITH THE LOCAL INSPECTION APPROVAL AGENCY. (DEFINITION "CODE" - STATE, CITY AND/OR LOCAL CODE REQUIREMENTS)
- CONTRACTOR SHALL INSTALL ALL GROUNDING AS REQUIRED BY THE LATEST APPLICABLE VERSION OF THE NATIONAL ELECTRIC CODE (N.E.C.) AND ANY STATE, CITY AND/OR LOCAL CODE REQUIREMENTS. THE MORE STRINGENT CODE REQUIREMENT SHALL BE UTILIZED AND VERIFIED WITH THE LOCAL INSPECTION APPROVAL AGENCY.
- CONTRACTOR SHALL (PRIOR TO BID)
 - VISIT THE JOB/CONSTRUCTION SITE AND FIELD VERIFY ALL EXISTING CONDITIONS
 - TAKE ALL CONSIDERATIONS INTO ACCOUNT AT THE TIME OF BID. NO CONSIDERATIONS WILL BE GRANTED TO THE CONTRACTOR AFTER THE BID HAS BEEN ACCEPTED.
- ALL RECEPTACLES AND COVERS SHALL BE INSTALLED AS PER N.E.C. ARTICLE 406 AND AS REQUIRED BY CODE. LIGHT SWITCHES AND COVERS SHALL BE WHITE UNLESS NOTED OTHERWISE BY THE ARCHITECT.
- ALL ELECTRICAL METALLIC TUBING (EMT), RIGID NON-METALLIC CONDUIT, FLEXIBLE METALLIC CONDUIT, FLEXIBLE NON-METALLIC CONDUIT, "SEALTIGHT" TYPE CONDUITS AND ALL OTHER CONDUITS THAT DO NOT CONTAIN A REQUIRED CODE SIZED GROUND WIRE SHALL HAVE A REQUIRED CODE SIZED BOND WIRE INSTALLED WITH THE CIRCUIT CONDUCTORS.
- RECEPTACLES INSTALLED WITHIN 6'-0" OF SINKS OR WATER SHALL BE CONNECTED TO A GROUND FAULT CIRCUIT INTERRUPTER TYPE CIRCUIT BREAKER OR TO A GROUND FAULT CIRCUIT INTERRUPTER TYPE RECEPTACLE.
- CONTRACTOR SHALL FURNISH AND INSTALL WEATHER PROOF G.F.C.I. RECEPTACLE AT AN ACCESSIBLE LOCATION NEAR ALL HVAC EQUIPMENT IN ACCORDANCE WITH N.E.C. ARTICLE 210.63 AND AS REQUIRED BY CODE. CONTRACTOR IS RESPONSIBLE FOR THE COORDINATION OF THESE RECEPTACLES IN THE FIELD REGARDLESS OF THE PLAN LAYOUT.
- CONTRACTOR SHALL, PRIOR TO BID AND ROUGH-IN, FIELD VERIFY ALL HVAC ELECTRICAL REQUIREMENTS AGAINST THE PLAN REQUIREMENTS. FAILURE TO VERIFY AND NOTIFY ENGINEER/ARCHITECT PRIOR TO ROUGH-IN SHALL INDICATE THAT THE CONTRACTOR ASSUMES ALL RESPONSIBILITY FOR THE DESIGN AND INSTALLATION REQUIREMENTS.
- CONTRACTOR SHALL FURNISH AND INSTALL ALL AC UNITS SHALL HAVE INTEGRAL CONTROLLERS WITH OVERLOAD PROTECTION AND DISCONNECT FUNCTIONS PER N.E.C. CONTRACTOR SHALL INSTALL GFI DUPLEX SERVICE RECEPTACLES NEAR CONDENSER UNIT. PROVIDE MOTOR STARTERS WITH OVERLOAD PROTECTION AND DISCONNECT FUNCTIONS FOR AIR HANDLERS, IF NOT PROVIDED BY MECHANICAL CONTRACTOR.
- CONTRACTOR SHALL FURNISH AND INSTALL (1) 30kVA, 480V-120/208V, 3Ø, 4-WIRE TRANSFORMER WALL MOUNT. CONTRACTOR SHALL EVALUATE AND INSTALL THE NEW TRANSFORMER IN THE AREA ON THE WALL SHOWN APPROXIMATELY 10FT ABOVE FINISHED FLOOR.

PANELBOARD SCHEDULE (120/208V 3Ø)													
MARK: MAIN PANEL "DP"													
CKT #	LOAD DESCRIPTION	BREAKER P TRIP	FEEDER/CONDUIT FEED GRD SIZE	PHASE (VA)			PHASE (VA)			FEEDER/CONDUIT FEED GRD SIZE	BREAKER P TRIP	LOAD DESCRIPTION	CKT #
				A	B	C	A	B	C				
1	OPEN AREA RECEPT	1 20	10 12 1/2	1,080			540			10 12 1/2	1 20	TV RECEPT	2
3	CLASS RM RECEPT	1 20	10 12 1/2		1,260			535		10 12 1/2	1 20	LTG	4
5	SPACE	-	-	-	-	-	-	-	180	10 12 1/2	1 20	HP-1 RECEPT	6
7	SPACE	-	-	-	-	-	180	-	-	10 12 1/2	1 20	AHU-1 RECEPT	8
9	OFFICE RECEPT	1 20	10 12 1/2	900								SPACE	10
11	SPACE	-	-	-	-	-	-	-	-	-	-	SPACE	12
13	SPACE	-	-	-	-	-	-	-	-	-	-	SPACE	14
15	SPACE	-	-	-	-	-	-	-	-	-	-	SPACE	16
17	SPACE	-	-	-	-	-	-	3,640		8 10 3/4	2 50	AHU-1	18
19	SPACE	-	-	-	-	-	-	3,640				SPACE	20
21	HP-1	2 25	10 12 1/2	1,665								SPACE	22
23	SPACE	-	-	-	1,665							SPACE	24
25	SPACE	-	-	-	-	-	-	-	-	-	-	SPACE	26
27	SPACE	-	-	-	-	-	-	-	-	-	-	SPACE	28
29	SPACE	-	-	-	-	-	-	-	-	-	-	SPACE	30
				1,080	3,825	1,665	4,360	535	3,820				
				TOTAL (kVA) ØA 5.44 ØB 4.36 ØC 5.485			HIGH PHASE (AMPS) 45.7						
				TOTAL CONNECTED LOAD (kVA) 15.285			TOTAL LOAD (AMPS) 42.4						

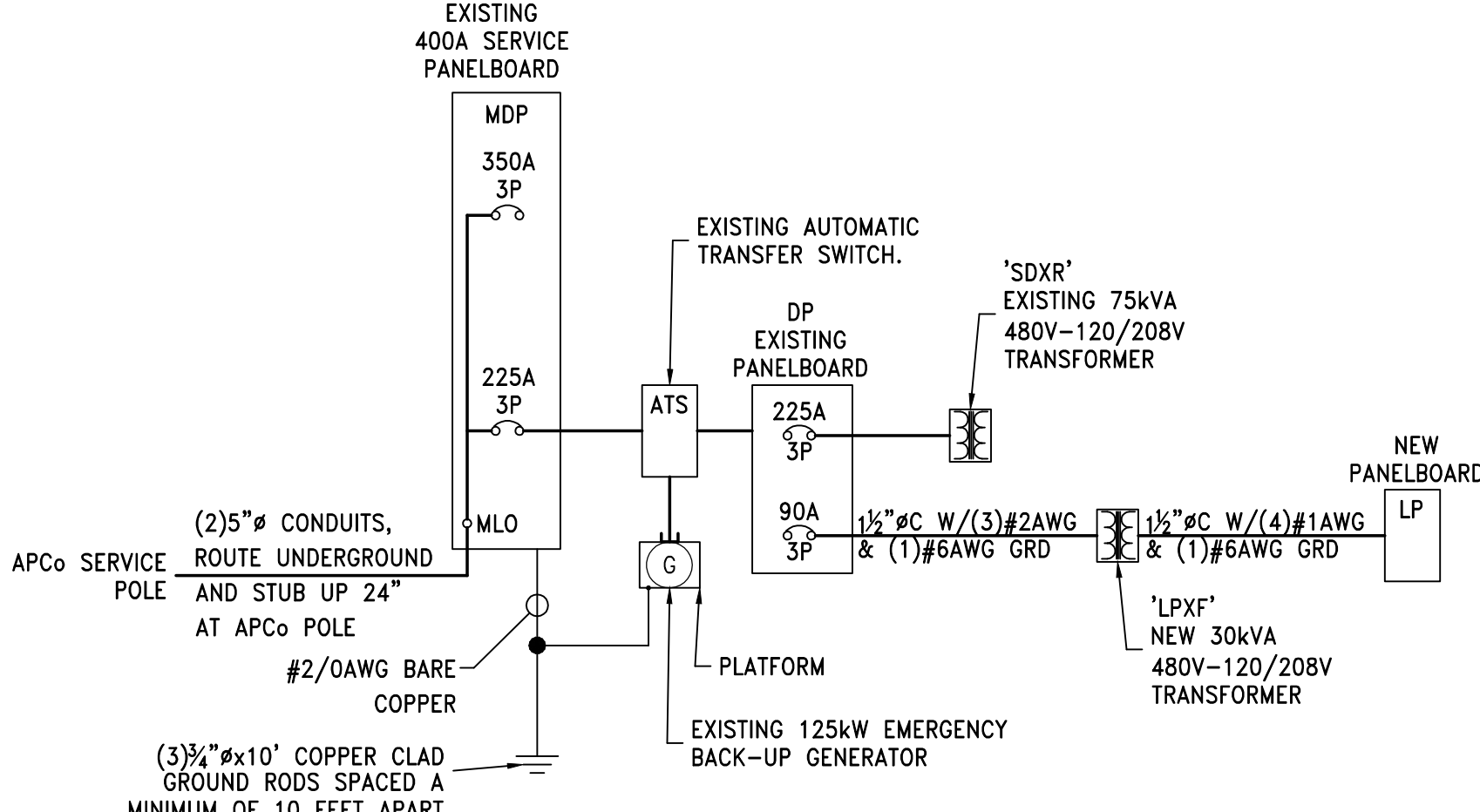
PANELBOARD COORDINATION SCHEDULE														
MARK	TYPE	MOUNTING	VOLTAGE	Ø	WIRE	MAIN SERVICE RATED	KAIC RATING	BUS RATING	NEUTRAL RATING	C/B TYPE	FEEDER			
											CONDUCTORS	GROUND	CONDUIT	
LP	NEMA-1	FLUSH	120/208	3	4	125MB	NO	10	150	150	BOLT-ON	(3)#1AWG	#6AWG	1 1/2

PANELBOARD NOTES:

- ALL BUSSING COPPER, INCLUDING NEUTRAL AND GROUND. ALL LUGS 100 AMPS AND GREATER SHALL BE COPPER. ALL LUGS ON CIRCUIT BREAKERS GREATER THAN 400 AMPS SHALL BE COPPER.
- CONTRACTOR SHALL VERIFY WITH THE UTILITY COMPANY THE AVAILABLE FAULT CURRENT PRIOR TO PANELBOARD PURCHASE AND INSTALLATION. KAIC RATING LISTED IN PANELBOARD COORDINATION SCHEDULE SHALL BE THE MINIMUM RATING INSTALLED UNLESS REQUIRED BY LOCAL UTILITY COMPANY.
- CONTRACTOR SHALL FURNISH AND INSTALL NEW ARC-FLASH WARNING LABEL ON NEW ELECTRICAL EQUIPMENT AND ANY EXISTING ELECTRICAL EQUIPMENT THAT HAS BEEN MODIFIED. ELECTRICAL EQUIPMENT IS LISTED AS SWITCHBOARDS, SWITCHGEAR, PANELBOARDS, INDUSTRIAL CONTROL PANELS, METER SOCKET ENCLOSURES AND MOTOR CONTROL CENTERS AS PER NEC 110.16(6)
- NEW PANELBOARD SUPPLIED BY A FEEDER SHALL BE PERMANENTLY MARKED TO INDICATE EQUIPMENT WHERE THE POWER ORIGINATES AS PER NEC 480.4(B). THE LABEL SHALL BE PERMANENTLY AFFIXED, OF SUFFICIENT DURABILITY TO WITHSTAND THE ENVIRONMENT INVOLVED, AND NOT HANDWRITTEN.



EXISTING ELECTRICAL AC RISER DIAGRAM
SCALE:N.T.S.



NEW ELECTRICAL AC RISER DIAGRAM
SCALE:N.T.S.

REV.	DESCRIPTION	DATE	BY	CHK'D
A	ISSUED FOR BID	04/24/26	WES	JJM

11880 Cranston Drive, Ste. 101
Arlington, Tennessee 38002
(901) 290-5444

457 St. Michael Street
Mobile, Alabama 36602
(251) 433-1611

PROJECT

TERMINAL RAILROAD TRAINING CENTER

126 INDUSTRIAL CANAL ROAD
MOBILE, ALABAMA

TITLE

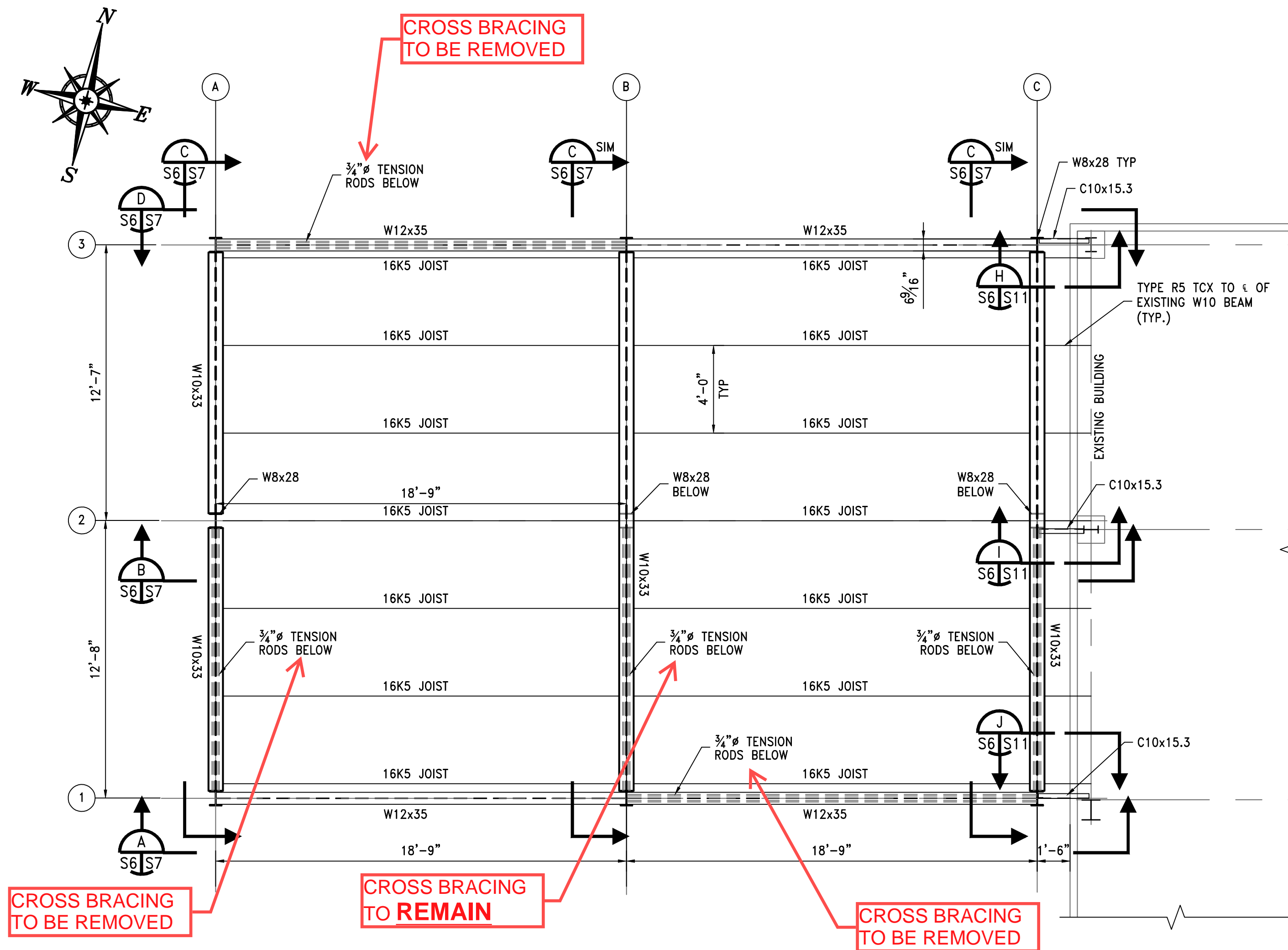
ELECTRICAL POWER PLAN

DATE 01/14/26 22x34 REV. A

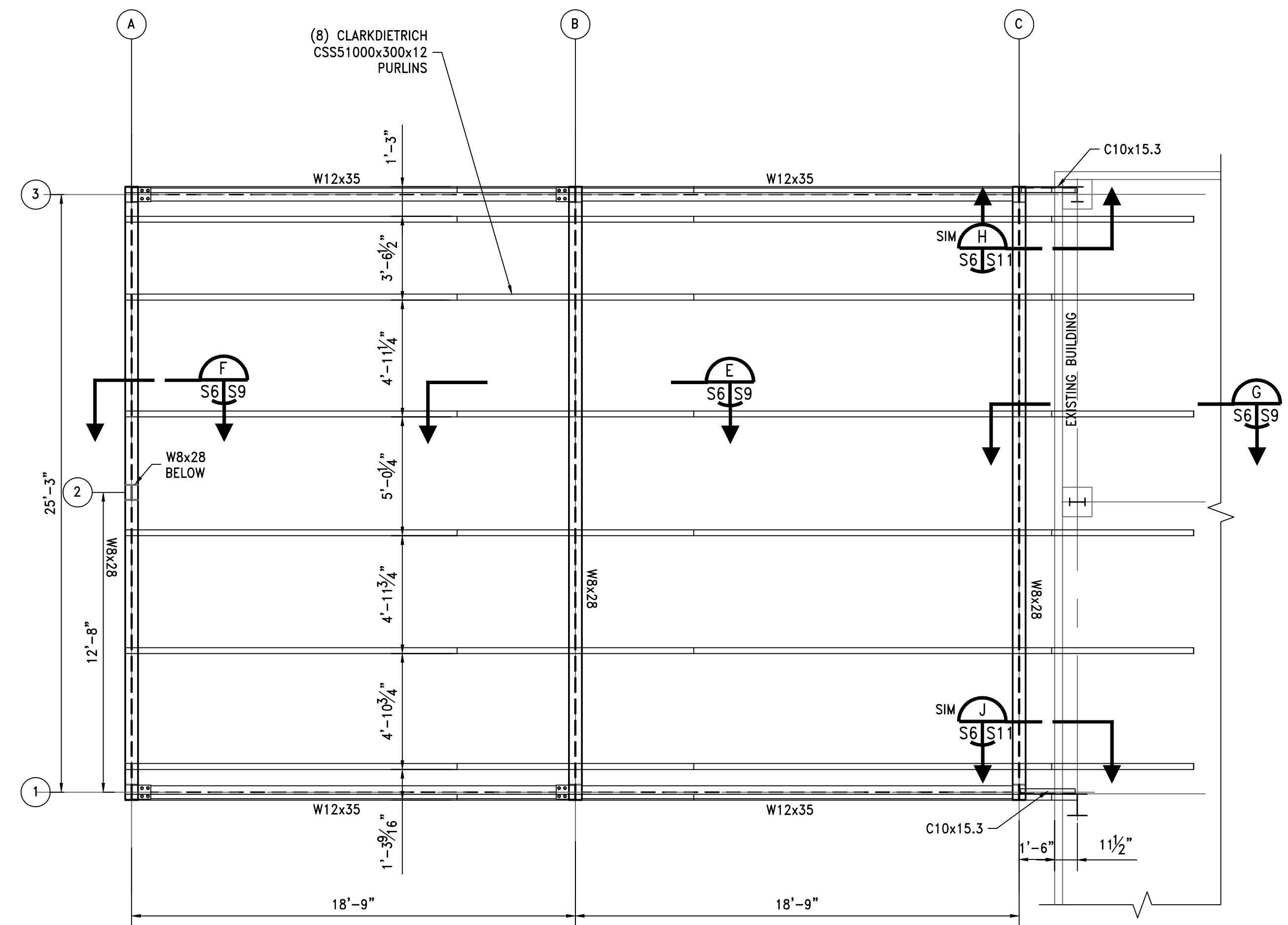
© CMG ENGINEERS, INC. 2026 - CONFIDENTIAL, VALUABLE, AND PROPRIETARY INFORMATION

DRAWING NUMBER **4735-E3**

FOR REFERENCE ONLY



OFFICE FLOOR STRUCTURAL PLAN VIEW
1/4"=1'-0"



ROOF STRUCTURAL PLAN VIEW
1/4"=1'-0"

NOTE:
MEASUREMENTS BETWEEN PURLINS ARE TAKEN FROM OUTSIDE-OF-WEB TO OUTSIDE-OF-WEB. SEE SECTION C ON DWG 4146-S7 FOR PURLIN ORIENTATION.

FOR REFERENCE ONLY

FOR REFERENCE ONLY

REV.	DESCRIPTION	DATE	BY	CHK'D
1	ADJUSTED PURLIN SPACING	12/06/22	ECL	GDEC
0	ISSUED FOR CONSTRUCTION	10/14/22	JWM	GDEC

Cowles, Murphy, Glover & Associates
A Full Service Engineering Firm

PERFORMANCE • RELIABILITY • EXPERIENCE

457 St. Michael St., Mobile, AL 36602
13 Thrash Rd., LaGrange, GA 30241
11880 Cranston Dr. Ste 102, Arlington, TN 38002
Alabama (251) 433-1611
Georgia (706) 302-2831 Tennessee (901) 290-5444

PROJECT
TERMINAL RAILWAY OFFICE ADDITION/RENOVATION
126 INDUSTRIAL CANAL ROAD
MOBILE, ALABAMA

TITLE		PLAN VIEW	
SCALE	AS NOTED	DRAWN BY	JWM
JOB NO.	4146-22	CHECKED BY	GDEC
DATE	04/07/22	DATE	04/07/22
SHEET	1 OF 1	22x34	REV. 1
DRAWING NUMBER	4146-S6		

© COWLES, MURPHY, GLOVER & ASSOCIATES, INC., 2022
CONFIDENTIAL, VALUABLE, AND PROPRIETARY INFORMATION

