

TOE OF CHANNEL

MOBILE RIVER

STATE PLANE COORDINATES  
N. 238 548  
E. 1 801 150

STATE PLANE COORDINATES  
N. 238 554  
E. 1 800 996

STATE PLANE COORDINATES  
N. 237 349  
E. 1 801 106

STATE PLANE COORDINATES  
N. 237 509  
E. 1 800 959

STATE PLANE COORDINATES  
N. 237 355  
E. 1 800 954

**MCDUFFIE DOCK 1**  
MIN. DEPTH -53.0  
MAX. DEPTH -54.0

MCDUFFIE DOCK 1

1200'

154'

153'

TOE OF CHANNEL



REV NO.	DATE	BY	REVISION



PROJECT NO. TBD  
LOWER HARBOR  
BERTH BED-LEVELING ON-CALL  
MCDUFFIE TERMINAL-DOCK 1

DWG BY:	DATE:	REVISIONS				SCALE:
		BY:	DATE:	BY:	DATE:	1"=100'
						DRAWING NO.:
						XXXXX-01



TOE OF CHANNEL

MOBILE RIVER

STATE PLANE COORDINATES  
N. 240 775  
E. 1 801 234

1024'

TOE OF CHANNEL

STATE PLANE COORDINATES  
N. 240 780  
E. 1 801 078

MCDUFFIE DOCK 3  
MIN. DEPTH -53.0  
MAX. DEPTH -54.0

MCDUFFIE DOCK 3

STATE PLANE COORDINATES  
N. 239 751  
E. 1 801 194

155'

STATE PLANE COORDINATES  
N. 239 953  
E. 1 801 046

STATE PLANE COORDINATES  
N. 239 757  
E. 1 801 039

37+85

37+00

36+00

35+00

34+00

33+00

32+00

31+00

30+00

29+00

28+00

27+00

26+00

25+00

24+00

23+00

22+00

21+00

20+00

19+00

18+00

17+00

16+00

15+00

14+00

13+00

12+00

11+00

10+00

9+00

8+00

7+00

6+00

5+00

4+00

3+00

2+00

1+00

0+00

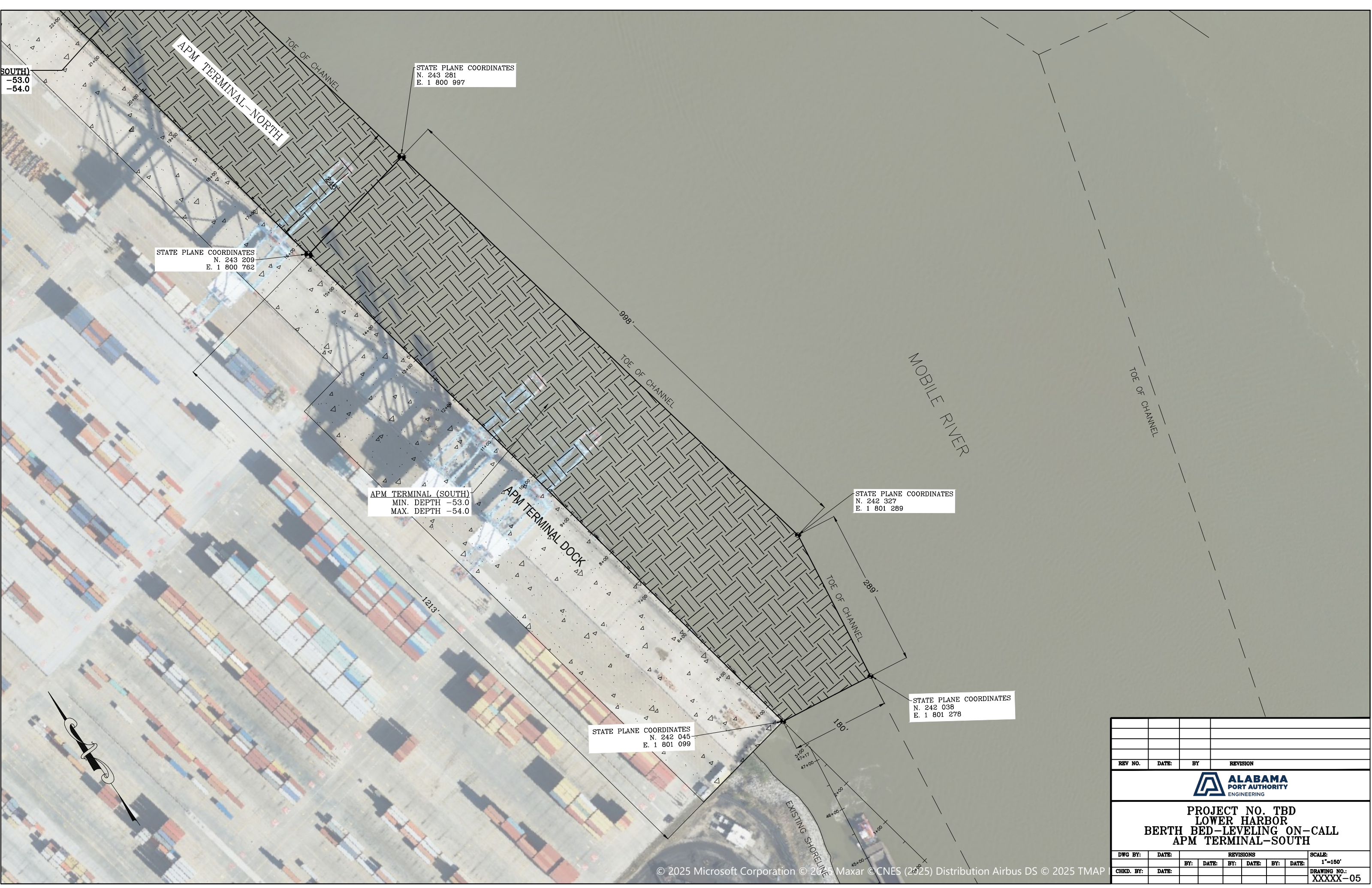
REV NO.	DATE	BY	REVISION



PROJECT NO. TBD  
LOWER HARBOR  
BERTH BED-LEVELING ON-CALL  
MAIN DOCKS - PIER 2

DWG BY:	DATE:	REVISIONS				SCALE:
		BY:	DATE:	BY:	DATE:	1"=100'
CHKD. BY:	DATE:					DRAWING NO.:
						XXXXX-03





SOUTH  
-53.0  
-54.0

APM TERMINAL-NORTH

STATE PLANE COORDINATES  
N. 243 281  
E. 1 800 997

STATE PLANE COORDINATES  
N. 243 209  
E. 1 800 762

APM TERMINAL (SOUTH)  
MIN. DEPTH -53.0  
MAX. DEPTH -54.0

APM TERMINAL DOCK

STATE PLANE COORDINATES  
N. 242 327  
E. 1 801 289

MOBILE RIVER

STATE PLANE COORDINATES  
N. 242 038  
E. 1 801 278

STATE PLANE COORDINATES  
N. 242 045  
E. 1 801 099

REV NO.	DATE	BY	REVISION
<b>PROJECT NO. TBD</b> <b>LOWER HARBOR</b> <b>BERTH BED-LEVELING ON-CALL</b> <b>APM TERMINAL-SOUTH</b>			
DWG BY:	DATE:	REVISIONS	SCALE:
			1"=150'
CHKD. BY:	DATE:	BY:	DATE:
			DRAWING NO.:
			XXXXX-05



STATE PLANE COORDINATES  
 N. 244 486  
 E. 1 800 487

PINTO TERMINAL  
 MIN. DEPTH -53.0  
 MAX. DEPTH -54.0

STATE PLANE COORDINATES  
 N. 244 374  
 E. 1 800 425

STATE PLANE COORDINATES  
 N. 243 801  
 E. 1 800 838

APM TERMINAL (SOUTH)  
 MIN. DEPTH -53.0  
 MAX. DEPTH -54.0

STATE PLANE COORDINATES  
 N. 243 281  
 E. 1 800 997

STATE PLANE COORDINATES  
 N. 243 209  
 E. 1 800 762

REV NO.	DATE	BY	REVISION



PROJECT NO. TBD  
 UPPER HARBOR MAINTENANCE LEVELING  
 BERTH BED-LEVELING ON-CALL  
 LOWER HARBOR

DWG BY:	DATE:	REVISIONS	SCALE:
			1"=150'
CHKD. BY:	DATE:	BY:	DATE:



STATE PLANE COORDINATES  
N. 244 467  
E. 1 801 526

STATE PLANE COORDINATES  
N. 244 586  
E. 1 801 227

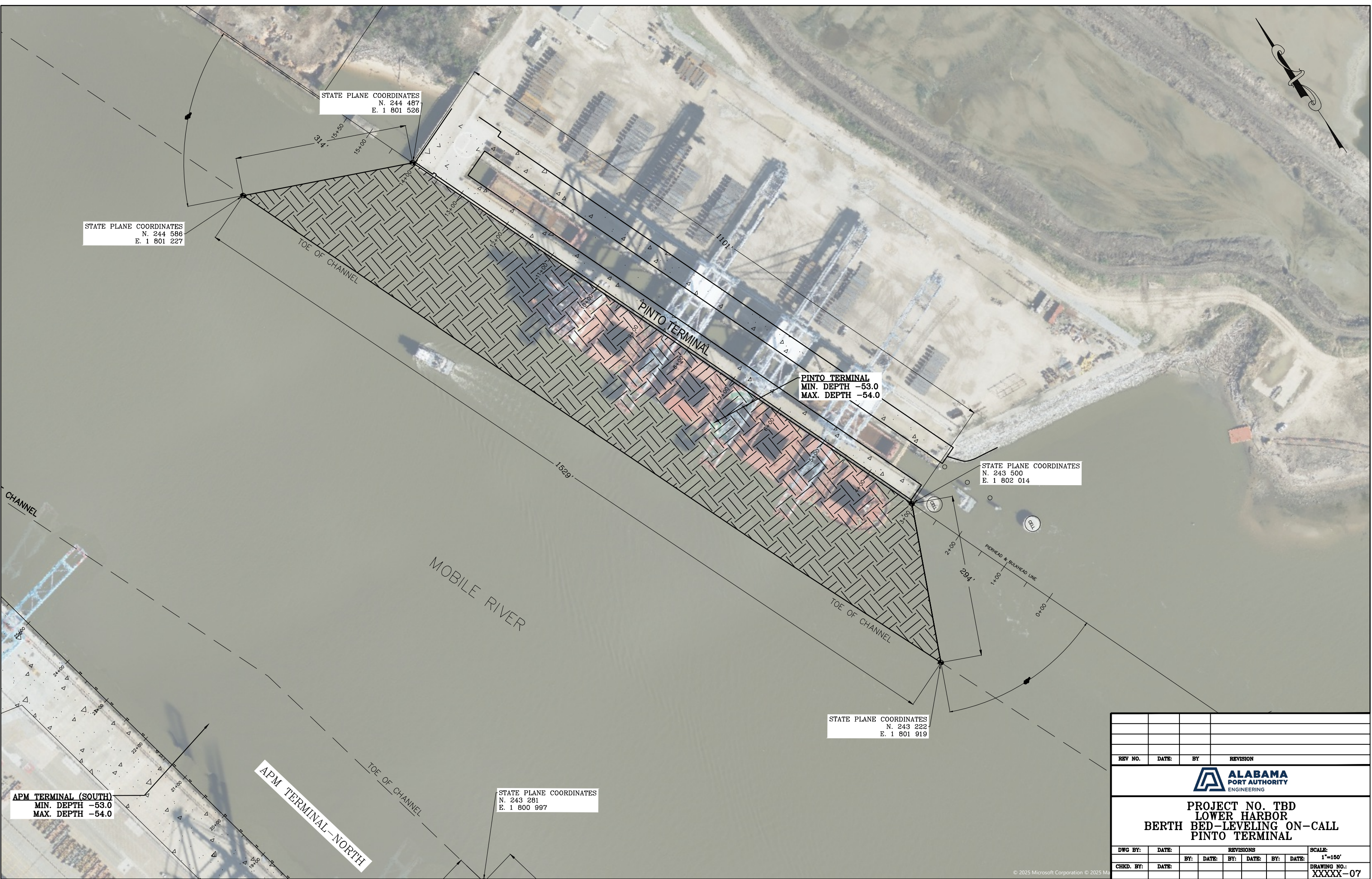
PINTO TERMINAL  
MIN. DEPTH -53.0  
MAX. DEPTH -54.0


STATE PLANE COORDINATES  
N. 243 500  
E. 1 802 014

STATE PLANE COORDINATES  
N. 243 222  
E. 1 801 919

STATE PLANE COORDINATES  
N. 243 281  
E. 1 800 997

APM TERMINAL (SOUTH)  
MIN. DEPTH -53.0  
MAX. DEPTH -54.0



REV NO.	DATE	BY	REVISION
			
<b>PROJECT NO. TBD</b> <b>LOWER HARBOR</b> <b>BERTH BED-LEVELING ON-CALL</b> <b>PINTO TERMINAL</b>			
DWG BY:	DATE:	REVISIONS	SCALE:
			1"=150'
CHKD. BY:	DATE:		DRAWING NO.:
			XXXXX-07

MOBILE RIVER



**PIER 2**  
 MIN. DEPTH -41.0  
 MAX. DEPTH -42.0

SEE PIERS 3 & 4  
 DREDGE TEMPLATE

STATE PLANE COORDINATES  
 N. 253,566  
 E. 1,799,494

STATE PLANE COORDINATES  
 N. 252,609  
 E. 1,799,618

CONTRACTOR RESPONSIBLE FOR  
 AVOIDING POTENTIAL UTILITY CONFLICT  
 AND CONSTRUCTION IN THIS GENERAL AREA.

STATE PLANE COORDINATES  
 N. 252,602  
 E. 1,799,567

COORDINATE TO BE TAKEN AS  
 RELATED TO BID ITEMS 4 & 5

STATE PLANE COORDINATES  
 N. 253,488  
 E. 1,799,442

PIER 2

895'

56'

MOBILE  
 CONVENTION  
 CENTER

PROJECT GENERAL NOTES:

- WHERE APPLICABLE, DREDGE WIDTHS SHALL EXTEND TO THE TOE OF THE ADJACENT FEDERAL NAVIGATION CHANNEL.
- HATCHED AREAS DESIGNATE THE DREDGE AREAS.
- WORK SHALL BE COORDINATED WITH ASPA OPERATIONS AND/OR ENGINEERING.
- THE CONTRACTOR SHALL VERIFY COORDINATES PRIOR TO COMMENCING DREDGING ACTIVITIES.
- PIPELINE LOCATIONS SHALL BE COORDINATED WITH THE HARBORMASTER AND ASPA OPERATIONS AND/OR ENGINEERING TO AVOID IMPACTS TO OPERATIONS. THE CONTRACTOR SHALL COORDINATE WITH ALL OTHER STAKEHOLDERS NECESSARY TO COMPLETE THE PROJECT.
- CONTRACTOR SHALL TAKE ALL NECESSARY PRECAUTIONS TO VERIFY ANY UTILITY CROSSINGS. ALL KNOWN CROSSINGS HAVE BEEN NOTED ON THE DRAWINGS; HOWEVER, THIS IS NOT INTENDED TO BE COMPREHENSIVE OF ALL POTENTIAL UTILITY CROSSINGS.
- SHOULD THE CONTRACTOR USE ASPA STRUCTURES FOR WINCH LINES, THE CONTRACTOR SHALL USE NON-ABRASIVE LINES TO CONNECT TO SAID STRUCTURES.
- THE INTENT OF THIS PROJECT IS TO PROVIDE A COMPLETE WORKING FACILITY. LACK OF DETAIL OR DIMENSION SHALL NOT ABROGATE FROM THAT INTENT. THE CONTRACTOR SHALL PROVIDE DETAIL OR DIMENSION LACKING IN ORDER TO PROVIDE A COMPLETE WORKING FACILITY.
- STRUCTURES SHOWN ARE FOR GENERAL REFERENCE. FENDER SYSTEMS ARE NOT SHOWN. CONTRACTOR SHALL FAMILIARIZE THEMSELVES WITH THE TYPES OF STRUCTURE AND FENDER SYSTEMS TO AVOID CONFLICT. CONTRACTOR MAY ADJUST TEMPLATE LINES ALONG STRUCTURES SLIGHTLY TO AVOID CONFLICTS. ANY ADJUSTMENT SHALL BE PRESENTED TO ASPA. PRIOR TO COMMENCEMENT OF DREDGING.
- ANY DEBRIS DISCOVERED BY DREDGING OPERATIONS SHALL BECOME PROPERTY OF THE CONTRACTOR.
- COORDINATION MEETINGS WILL BE HELD EACH WEEK WHILE WORK IS ONGOING. THE CONTRACTOR IS REQUIRED TO HAVE A REPRESENTATIVE PRESENT.
- ALL SURVEYS SHALL UTILIZE MLLW AS VERTICAL DATUM.
- ALL SURVEYS USED FOR ELEVATION VERIFICATION SHALL COLLECT SOUNDINGS ON MINIMUM 50' CENTERS PERPENDICULAR TO THE DOCK/STRUCTURE AND AT LEAST ONE LINE AS CLOSE AS PRACTICAL TO THE FENDER LINE. CONTRACT SPECIFICATIONS REGARDING SURVEYING SHALL BE FOLLOWED.

REV NO.	DATE	BY	REVISION

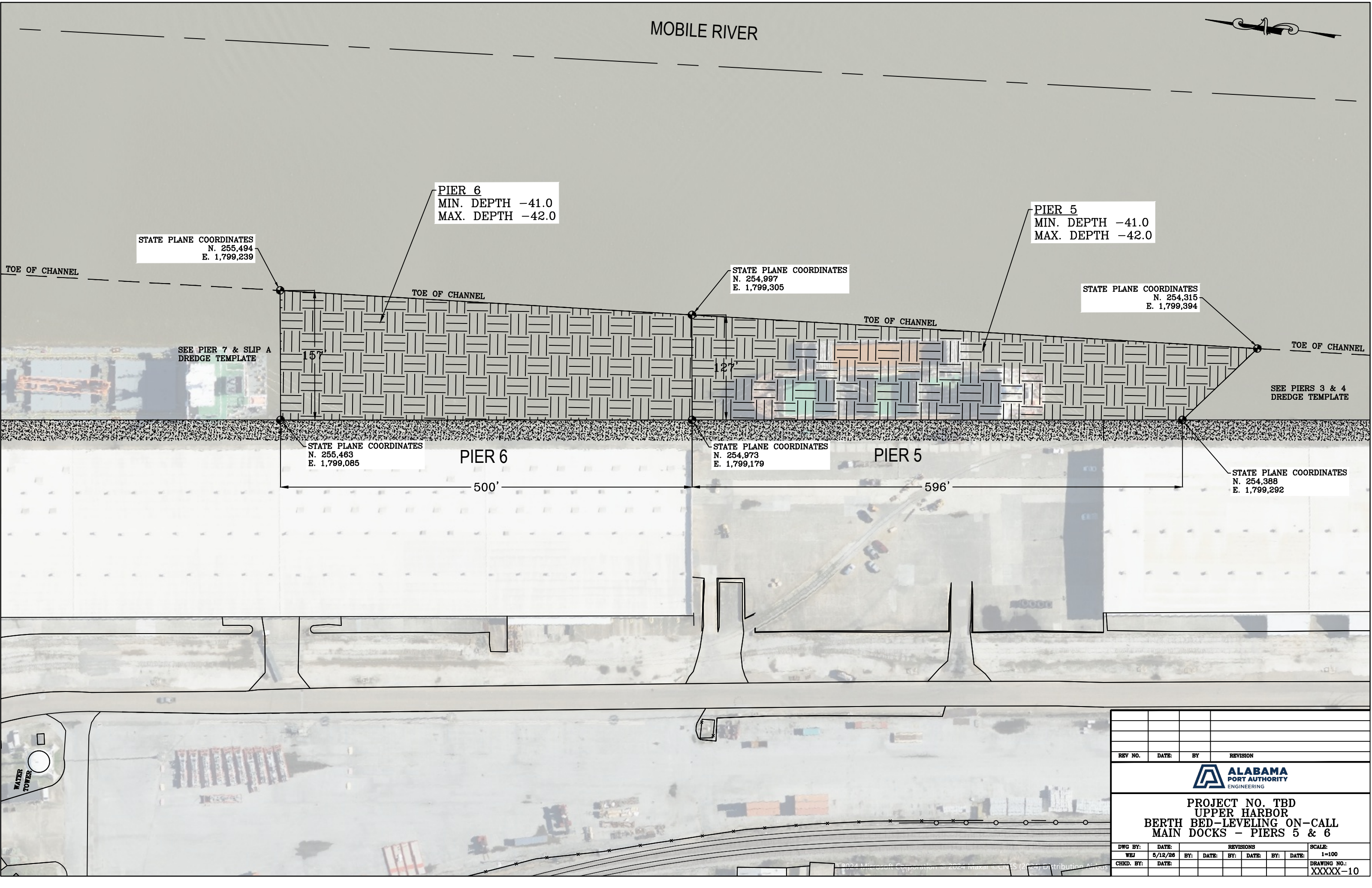


PROJECT NO. TBD  
 UPPER HARBOR  
 BERTH BED-LEVELING ON-CALL  
 MAIN DOCKS - PIER 2

DWG BY:	DATE:	BY:	DATE:	BY:	DATE:	BY:	DATE:	SCALE:
WEJ	5/12/26							1-100
CHKD. BY:	DATE:							DRAWING NO.: XXXXX-08



MOBILE RIVER



PIER 6  
MIN. DEPTH -41.0  
MAX. DEPTH -42.0

PIER 5  
MIN. DEPTH -41.0  
MAX. DEPTH -42.0

STATE PLANE COORDINATES  
N. 255,494  
E. 1,799,239

STATE PLANE COORDINATES  
N. 254,997  
E. 1,799,305

STATE PLANE COORDINATES  
N. 254,315  
E. 1,799,394

SEE PIER 7 & SLIP A  
DREDGE TEMPLATE

SEE PIERS 3 & 4  
DREDGE TEMPLATE

STATE PLANE COORDINATES  
N. 255,463  
E. 1,799,085

PIER 6

500'


STATE PLANE COORDINATES  
N. 254,973  
E. 1,799,179

PIER 5

596'

STATE PLANE COORDINATES  
N. 254,388  
E. 1,799,292

WATER TOWER

REV NO.	DATE	BY	REVISION
			
<b>PROJECT NO. TBD</b> <b>UPPER HARBOR</b> <b>BERTH BED-LEVELING ON-CALL</b> <b>MAIN DOCKS - PIERS 5 &amp; 6</b>			
DWG BY:	DATE:	REVISIONS	SCALE:
WEJ	5/12/26	BY: DATE: BY: DATE: BY: DATE:	1=100
CHKD. BY:	DATE:		DRAWING NO.:
			XXXXX-10

MOBILE RIVER



PIER A RIVER END  
MIN. DEPTH -41.0  
MAX. DEPTH -42.0

PIER 7  
MIN. DEPTH -41.0  
MAX. DEPTH -42.0

STATE PLANE COORDINATES  
N. 256,889  
E. 1,799,055

STATE PLANE COORDINATES  
N. 256,846  
E. 1,799,087

STATE PLANE COORDINATES  
N. 256,190  
E. 1,799,147

STATE PLANE COORDINATES  
N. 255,494  
E. 1,799,239

TOE OF CHANNEL

TOE OF CHANNEL

TOE OF CHANNEL

TOE OF CHANNEL

SEE SLIP B  
DREDGE TEMPLATE

SEE PIER 5 & 6  
DREDGE TEMPLATE

STATE PLANE COORDINATES  
N. 256,983  
E. 1,798,891

STATE PLANE COORDINATES  
N. 256,627  
E. 1,798,941

STATE PLANE COORDINATES  
N. 256,230  
E. 1,799,028

STATE PLANE COORDINATES  
N. 256,125  
E. 1,798,955

STATE PLANE COORDINATES  
N. 255,463  
E. 1,799,085

PIER A RIVER END

PIER A SOUTH  
MIN. DEPTH -31.0  
MAX. DEPTH -32.0

PIER 7

PIER 6

PIER 8

PIER 8  
MIN. DEPTH -31.0  
MAX. DEPTH -32.0

STATE PLANE COORDINATES  
N. 256,417  
E. 1,798,487

STATE PLANE COORDINATES  
N. 256,542  
E. 1,798,467

DO NOT DREDGE

STATE PLANE COORDINATES  
N. 256,305  
E. 1,798,444

REV NO. DATE BY REVISION



PROJECT NO. TBD  
UPPER HARBOR  
BERTH BED-LEVELING ON-CALL  
MAIN DOCKS - PIER 7, SLIP A, & PIER A RIVER END

DWG BY:	DATE:	REVISIONS				SCALE:
WEJ	5/12/28	BY:	DATE:	BY:	DATE:	1=100
CHKD. BY:	DATE:					DRAWING NO.: XXXXX-11

SEE SLIP C  
DREDGE TEMPLATE

**PIER B RIVER END**  
MIN. DEPTH -41.0  
MAX. DEPTH -42.0

STATE PLANE COORDINATES  
N. 258,049  
E. 1,798,864

STATE PLANE COORDINATES  
N. 258,101  
E. 1,798,773

**PIER B SOUTH**  
MIN. DEPTH -41.0  
MAX. DEPTH -42.0

PIER B SOUTH

1581'

STATE PLANE COORDINATES  
N. 258,111  
E. 1,797,624

STATE PLANE COORDINATES  
N. 257,417  
E. 1,798,841

STATE PLANE COORDINATES  
N. 257,328  
E. 1,798,998

STATE PLANE COORDINATES  
N. 257,136  
E. 1,799,023

STATE PLANE COORDINATES  
N. 257,919  
E. 1,797,659

STATE PLANE COORDINATES  
N. 256,889  
E. 1,799,055

STATE PLANE COORDINATES  
N. 257,665  
E. 1,797,704

STATE PLANE COORDINATES  
N. 256,983  
E. 1,798,891

PIER A NORTH

1559'

**PIER A NORTH**  
MIN. DEPTH -41.0  
MAX. DEPTH -42.0

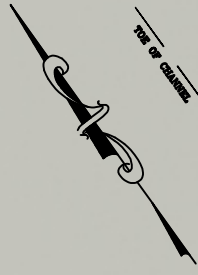
SEE PIER A / SLIP A  
& PIER A RIVER END  
DREDGE TEMPLATE

REV NO.	DATE	BY	REVISION



**PROJECT NO. TBD**  
**UPPER HARBOR**  
**BERTH BED-LEVELING ON-CALL**  
**MAIN DOCKS - SLIP B & PIER B RIVER END**

DWG BY:	DATE:	REVISIONS	SCALE:
WEJ	6/12/26	BY: DATE: BY: DATE: BY: DATE:	1-150
CHKD. BY:	DATE:		DRAWING NO.: XXXXX-12



SEE SLIP D  
DREDGE TEMPLATE

STATE PLANE COORDINATES  
N. 259,386  
E. 1,798,616

PIER C NORTH

STATE PLANE COORDINATES  
N. 259,426  
E. 1,798,545

PIER C RIVER END  
MIN. DEPTH -41.0  
MAX. DEPTH -42.0

PIER C SOUTH  
MIN. DEPTH -41.0  
MAX. DEPTH -42.0

STATE PLANE COORDINATES  
N. 259,278  
E. 1,797,423

STATE PLANE COORDINATES  
N. 258,584  
E. 1,798,635

PIER C SOUTH

STATE PLANE COORDINATES  
N. 258,500  
E. 1,798,781

STATE PLANE COORDINATES  
N. 259,057  
E. 1,797,458

STATE PLANE COORDINATES  
N. 258,274  
E. 1,798,822

STATE PLANE COORDINATES  
N. 258,049  
E. 1,798,864

STATE PLANE COORDINATES  
N. 258,834  
E. 1,797,495

STATE PLANE COORDINATES  
N. 258,101  
E. 1,798,773

PIER B NORTH  
MIN. DEPTH -41.0  
MAX. DEPTH -42.0

SEE SLIP B & PIER B RIVER END  
DREDGE TEMPLATE

REV NO.	DATE	BY	REVISION



PROJECT NO. TBD  
UPPER HARBOR  
BERTH BED-LEVELING ON-CALL  
MAIN DOCKS - SLIP C & PIER C RIVER END

DWG BY:	DATE:	REVISIONS	SCALE:
WEJ	5/12/26	BY: DATE: BY: DATE: BY: DATE:	1=150
CHKD. BY:	DATE:		DRAWING NO.: XXXXX-13

MOBILE RIVER

GRAIN ELEVATOR DOCK

SEE GRAIN ELEVATOR DREDGE TEMPLATE

CAUTION TO BE USED AROUND EXISTING STRUCTURE. STRUCTURE NOT TO BE USED BY CONTRACTOR TO INCLUDE WINCH LINES.

PIG IRON FACILITY

STATE PLANE COORDINATES  
N. 259,703  
E. 1,798,581

STATE PLANE COORDINATES  
N. 259,675  
E. 1,798,563

STATE PLANE COORDINATES  
N. 259,848  
E. 1,798,329

STATE PLANE COORDINATES  
N. 259,761  
E. 1,798,279

PIER C NORTH  
MIN. DEPTH -41.0  
MAX. DEPTH -42.0

STATE PLANE COORDINATES  
N. 259,386  
E. 1,798,616

DO NOT LEVEL

DO NOT LEVEL

DO NOT LEVEL

STATE PLANE COORDINATES  
N. 260,280  
E. 1,797,380

STATE PLANE COORDINATES  
N. 260,134  
E. 1,797,311

STATE PLANE COORDINATES  
N. 259,426  
E. 1,798,545

PIER C NORTH  
1504'

SEE SLIP C & PIER C RIVER END DREDGE TEMPLATE

REV NO.	DATE	BY	REVISION



PROJECT NO. TBD  
UPPER HARBOR  
BERTH BED-LEVELING ON-CALL  
MAIN DOCKS - SLIP D

DWG BY:	DATE:	REVISIONS	SCALE:
WEJ	6/12/26	BY: DATE: BY: DATE: BY: DATE:	1=150
CHKD. BY:	DATE:		DRAWING NO.:
			XXXXX-14

MOBILE RIVER



GRAIN ELEVATOR  
MIN. DEPTH -42.0  
MAX. DEPTH - 43.0

STATE PLANE COORDINATES  
N. 261,026  
E. 1,798,511

STATE PLANE COORDINATES  
N. 259,943  
E. 1,798,741

STATE PLANE COORDINATES  
N. 259,873  
E. 1,798,695

STATE PLANE COORDINATES  
N. 260,193  
E. 1,798,410

STATE PLANE COORDINATES  
N. 260,980  
E. 1,798,270

TOE OF CHANNEL

TOE OF CHANNEL

TOE OF CHANNEL

TOE OF CHANNEL

SEE PIER D2  
DREDGE TEMPLATE

DO NOT LEVEL

1166'

263'

800'

GRAIN ELEVATOR DOCK

SEE SLIP C  
DREDGE TEMPLATE

REV NO.	DATE	BY	REVISION



PROJECT NO. TBD  
UPPER HARBOR  
BERTH BED-LEVELING ON-CALL  
MAIN DOCKS - GRAIN ELEVATOR

DWG BY:	DATE:	REVISIONS	SCALE:
WEJ	5/12/26	BY: DATE: BY: DATE: BY: DATE:	1=100
CHKD. BY:	DATE:		DRAWING NO.: XXXXX-15

MOBILE RIVER



PIER D2  
 MIN. DEPTH -41.0  
 MAX. DEPTH -42.0

STATE PLANE COORDINATES  
 N. 261,708  
 E. 1,798,366

STATE PLANE COORDINATES  
 N. 261,026  
 E. 1,798,511

TOE OF CHANNEL

TOE OF CHANNEL

SEE PIER E  
 DREDGE TEMPLATE

SEE GRAIN ELEVATOR/PIER D  
 DREDGE TEMPLATE

STATE PLANE COORDINATES  
 N. 261,181  
 E. 1,798,260

222'

221'

200'

500'

PIER E

STATE PLANE COORDINATES  
 N. 261,669  
 E. 1,798,147

DO NOT LEVEL

STATE PLANE COORDINATES  
 N. 260,985  
 E. 1,798,294

PIER D2

STATE PLANE COORDINATES  
 N. 261,176  
 E. 1,798,234

GRAIN ELEVATOR DOCK

REV NO.	DATE	BY	REVISION
PROJECT NO. TBD UPPER HARBOR BERTH BED-LEVELING ON-CALL MAIN DOCKS - PIER D2			
DWG BY:	DATE:	REVISIONS	SCALE:
WEJ	5/12/26	BY: DATE: BY: DATE: BY: DATE:	1=100
CHKD. BY:	DATE:		DRAWING NO.:
			XXXXX-16



# MOBILE RIVER

**PIER E**  
MIN. DEPTH -41.0  
MAX. DEPTH -42.0

STATE PLANE COORDINATES  
N. 262,971  
E. 1,798,098

STATE PLANE COORDINATES  
N. 261,708  
E. 1,798,366

STATE PLANE COORDINATES  
N. 262,760  
E. 1,797,952

STATE PLANE COORDINATES  
N. 261,669  
E. 1,798,147

TOE OF CHANNEL

1291'

232'

SEE RAIL FERRY  
DREDGE TEMPLATE

SEE PIER D2  
DREDGE TEMPLATE

1110'  
PIER E

PIER D2

REV NO.	DATE	BY	REVISION
<b>PROJECT NO. TBD UPPER HARBOR BERTH BED-LEVELING ON-CALL MAIN DOCKS - PIER E</b>			
DWG BY:	DATE	REVISIONS	SCALE:
WEJ	5/12/26		1-100
CHKD. BY:	DATE	BY: DATE: BY: DATE: BY: DATE:	DRAWING NO.:
			XXXXX-17



STATE PLANE COORDINATES  
N. 264,698  
E. 1,796,554

AUTOMOTIVE TERMINAL  
MIN. DEPTH -40.0  
MAX. DEPTH -41.0

STATE PLANE COORDINATES  
N. 264,505  
E. 1,797,862

THREE MILE CREEK

350'

475'

FACE OF DOCK

STATE PLANE COORDINATES  
N. 264,149  
E. 1,797,874

AUTOMOTIVE TERMINAL (AIT)

RAMP AREA

STATE PLANE COORDINATES  
N. 264,346  
E. 1,796,502

STATE PLANE COORDINATES  
N. 264,168  
E. 1,797,740

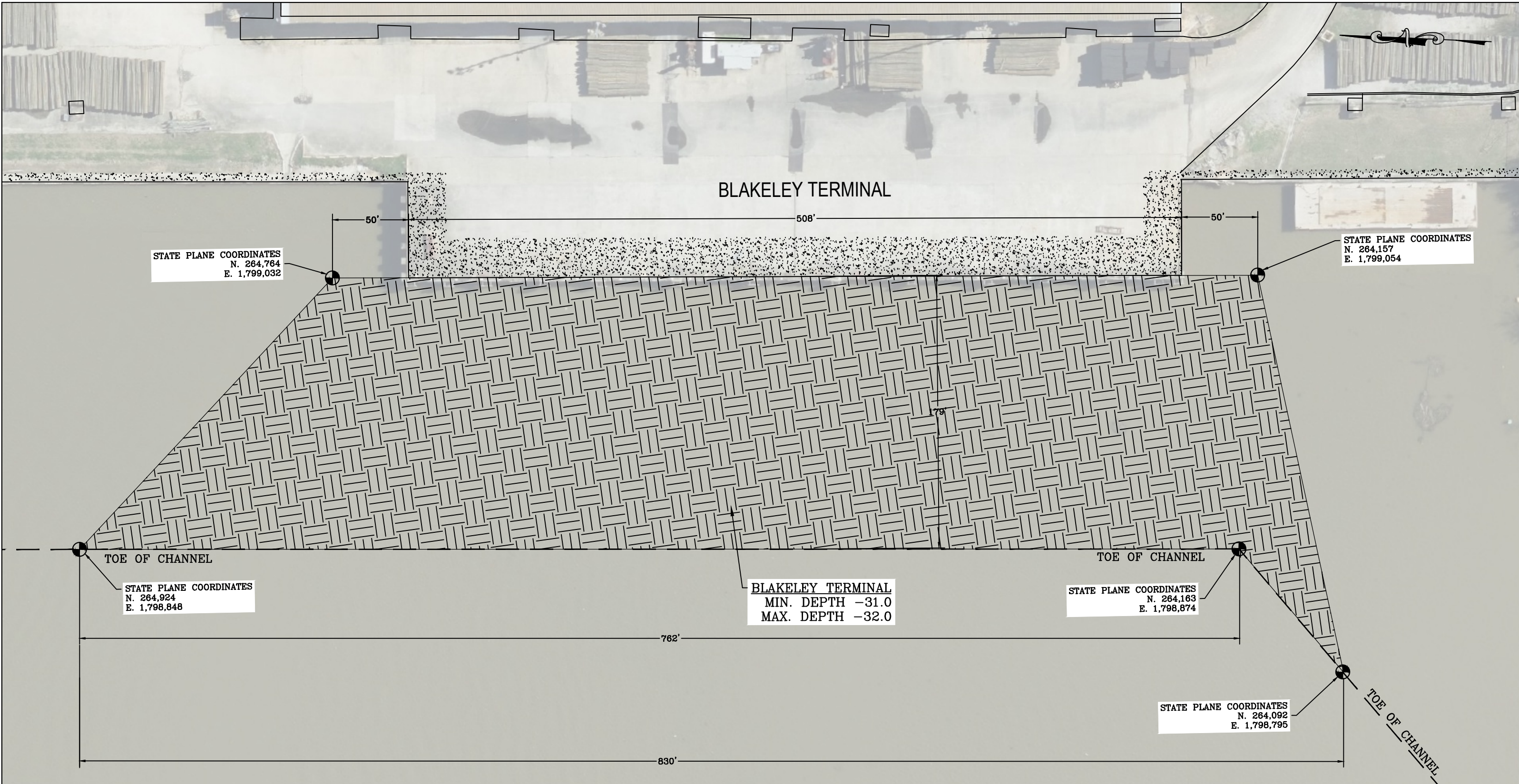
SEE RAIL FERRY  
DREDGE TEMPLATE


REV NO.	DATE	BY	REVISION



PROJECT NO. TBD  
UPPER HARBOR  
BERTH BED-LEVELING ON-CALL  
MAIN DOCKS - AUTOMOTIVE TERMINAL

DWG BY:	DATE:	REVISIONS	SCALE:
WEJ	6/12/26	BY: DATE: BY: DATE:	1-100
CHKD. BY:	DATE:		DRAWING NO.: XXXXX-19



REV NO.	DATE	BY	REVISION				
 <b>ALABAMA PORT AUTHORITY</b> ENGINEERING							
<b>PROJECT NO. TBD</b> <b>UPPER HARBOR</b> <b>BERTH BED-LEVELING ON-CALL</b> <b>MAIN DOCKS - BLAKELEY TERMINAL</b>							
DWG BY:	DATE:	REVISIONS		SCALE:			
WEJ	5/12/26	BY:	DATE:	BY:	DATE:	BY:	DATE:
CHKD. BY:	DATE:						
							DRAWING NO.:
							XXXXX-20

STATE PLANE COORDINATES  
 N. 194,518  
 E. 1,773,225

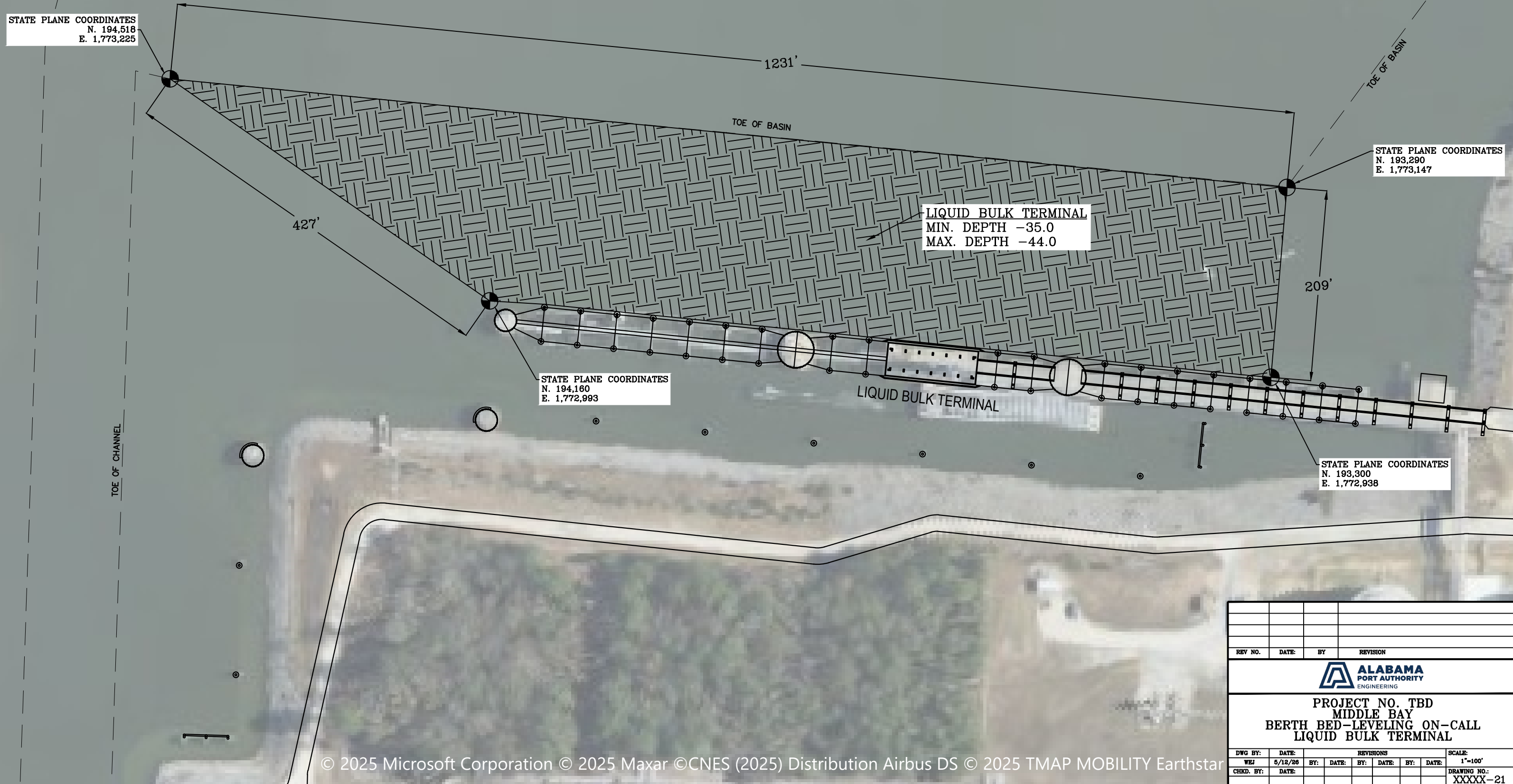
STATE PLANE COORDINATES  
 N. 193,290  
 E. 1,773,147

STATE PLANE COORDINATES  
 N. 194,160  
 E. 1,772,993

STATE PLANE COORDINATES  
 N. 193,300  
 E. 1,772,938

LIQUID BULK TERMINAL  
 MIN. DEPTH -35.0  
 MAX. DEPTH -44.0

LIQUID BULK TERMINAL

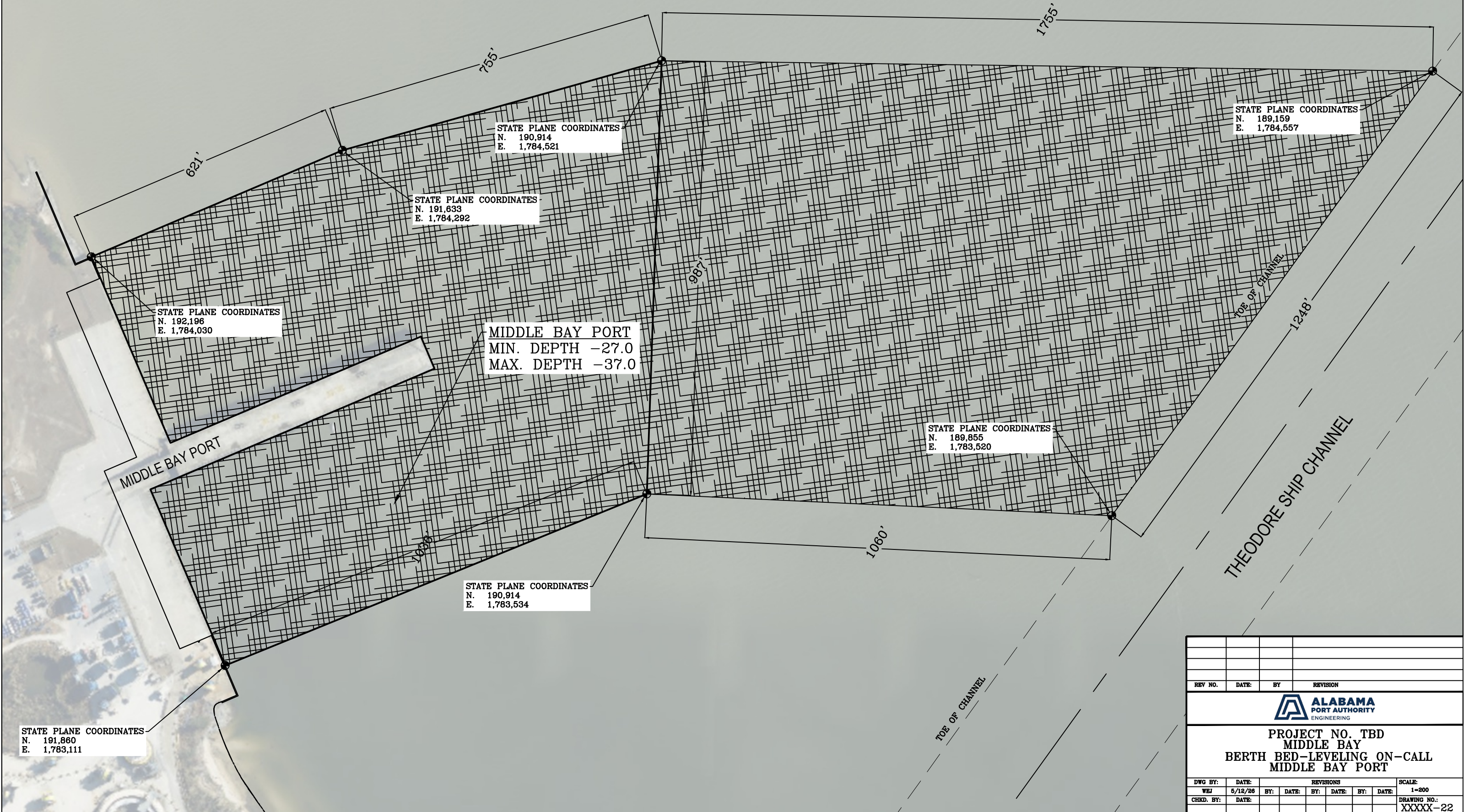


REV NO.	DATE	BY	REVISION

**ALABAMA PORT AUTHORITY ENGINEERING**

**PROJECT NO. TBD  
 MIDDLE BAY  
 BERTH BED-LEVELING ON-CALL  
 LIQUID BULK TERMINAL**

DWG BY:	DATE:	REVISIONS				SCALE:
WEJ	5/12/26	BY:	DATE:	BY:	DATE:	1"=100'
CHKD. BY:	DATE:					DRAWING NO.:
						XXXXX-21



STATE PLANE COORDINATES  
N. 192,196  
E. 1,784,030

STATE PLANE COORDINATES  
N. 191,833  
E. 1,784,292

STATE PLANE COORDINATES  
N. 190,914  
E. 1,784,521


STATE PLANE COORDINATES  
N. 189,159  
E. 1,784,557

**MIDDLE BAY PORT**  
MIN. DEPTH -27.0  
MAX. DEPTH -37.0

STATE PLANE COORDINATES  
N. 189,855  
E. 1,783,520

STATE PLANE COORDINATES  
N. 190,914  
E. 1,783,534

STATE PLANE COORDINATES  
N. 191,860  
E. 1,783,111

REV NO.	DATE	BY	REVISION
			
<b>PROJECT NO. TBD</b> <b>MIDDLE BAY</b> <b>BERTH BED-LEVELING ON-CALL</b> <b>MIDDLE BAY PORT</b>			
DWG BY:	DATE:	REVISIONS	SCALE:
WEJ	5/12/26	BY: DATE: BY: DATE: BY: DATE:	1-200
CHKD. BY:	DATE:		DRAWING NO.:
			XXXXX-22