





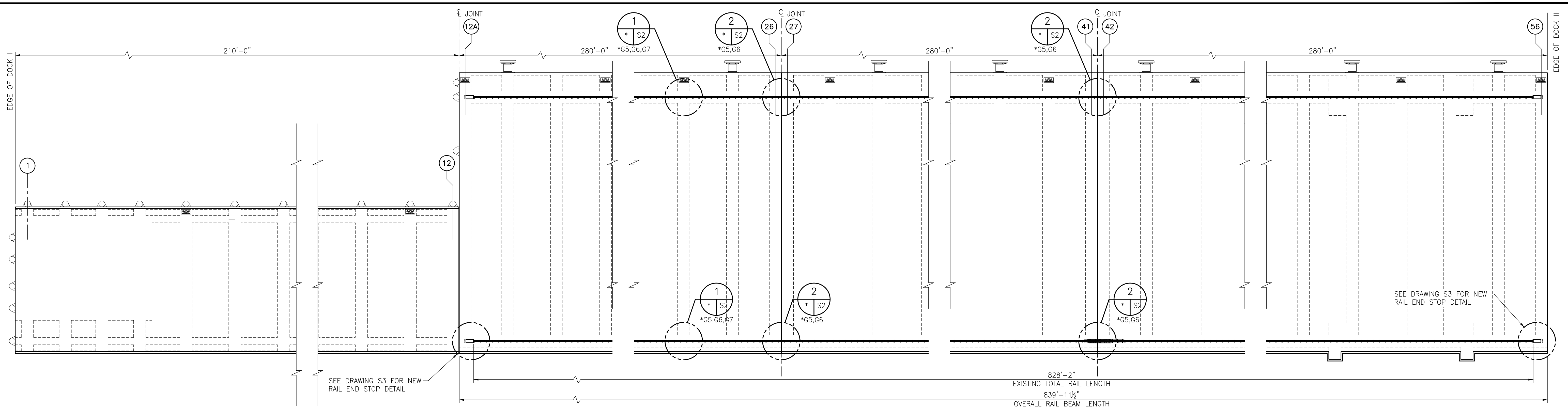
ALABAMA PORT AUTHORITY

McDUFFIE TERMINAL - DOCK II REFURBISHMENT SUPPLY OF RAIL AND ASSOCIATED COMPONENTS

KAY IVEY, GOVERNOR OF ALABAMA
DOUG OTTO, DIRECTOR

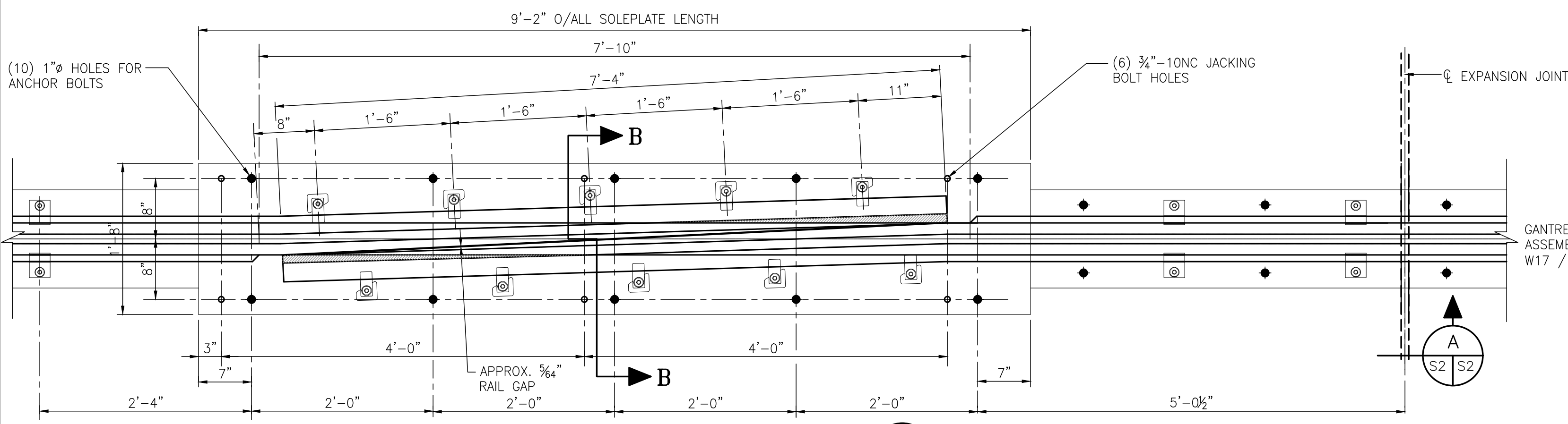
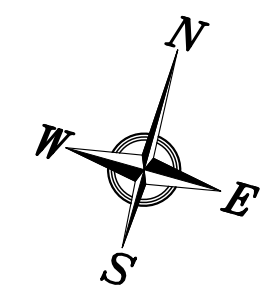


NOTES										 <p>THIS DOCUMENT IS THE PROPERTY OF APTIM. IT MAY CONTAIN INFORMATION DESCRIBING TECHNOLOGY OWNED BY APTIM AND DEEMED TO BE COMMERCIALY SENSITIVE. IT IS TO BE USED ONLY IN CONNECTION WITH WORK BEING PERFORMED BY APTIM. REPRODUCTION IN WHOLE OR IN PART FOR ANY PURPOSE OTHER THAN WORK PERFORMED BY APTIM IS FORBIDDEN EXCEPT BY EXPRESS WRITTEN PERMISSION OF APTIM. IT IS TO BE SAFEGUARDED AGAINST BOTH DELIBERATE AND INADVERTENT DISCLOSURE TO ANY THIRD PARTY.</p>	 CLIENT DWG NO:				
											McDUFFIE TERMINAL -- DOCK II REFURBISHMENT SUPPLY OF RAIL AND ASSOCIATED COMPONENTS PROJECT COVER SHEET FOR: ALABAMA PORT AUTHORITY				
	REFERENCE DRAWINGS	NO.	REVISION	DRAWN	CK'D	APPD	DATE	DRAWN: ECW	CK'D: JEJ	APPD: RSG	DATE: 11/10/25	SCALE: NONE	PROJECT NO: 4732	DWG NO: G1	REV: A



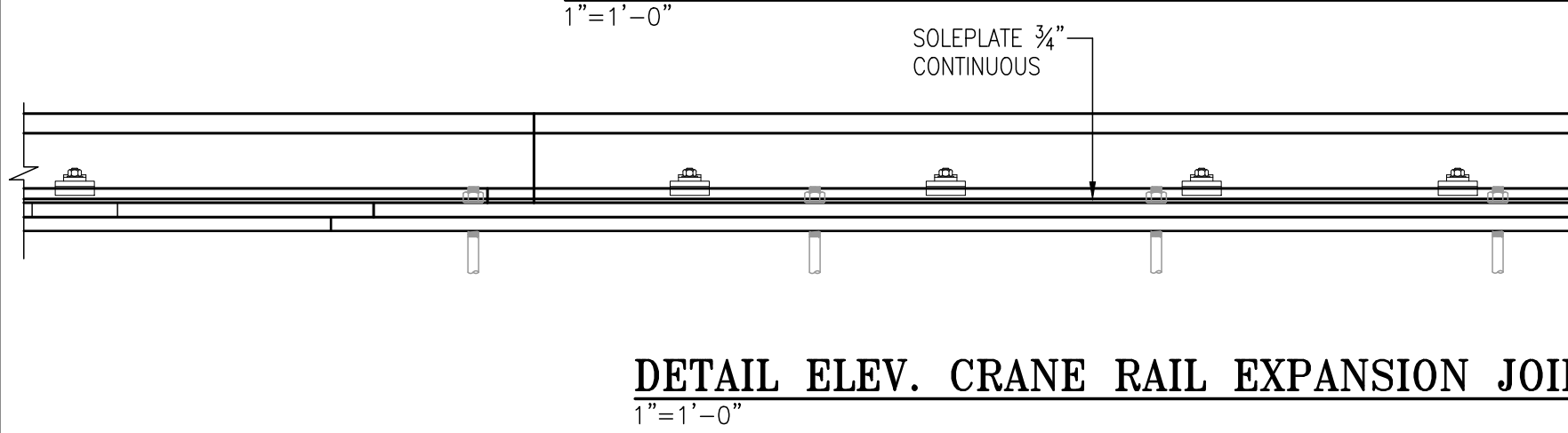
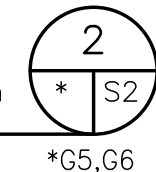
RAIL PLAN

1"=20'



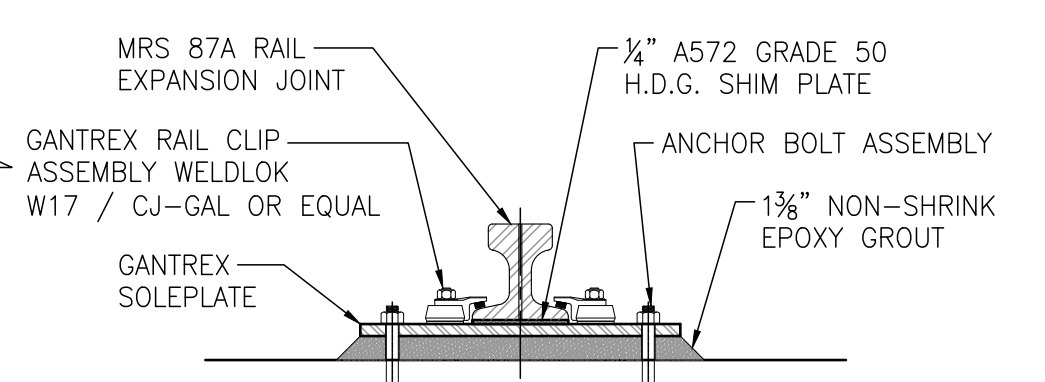
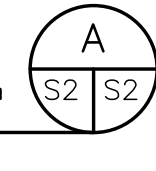
DETAIL PLAN AT CRANE RAIL EXPANSION JOINT

1"=1'-0"



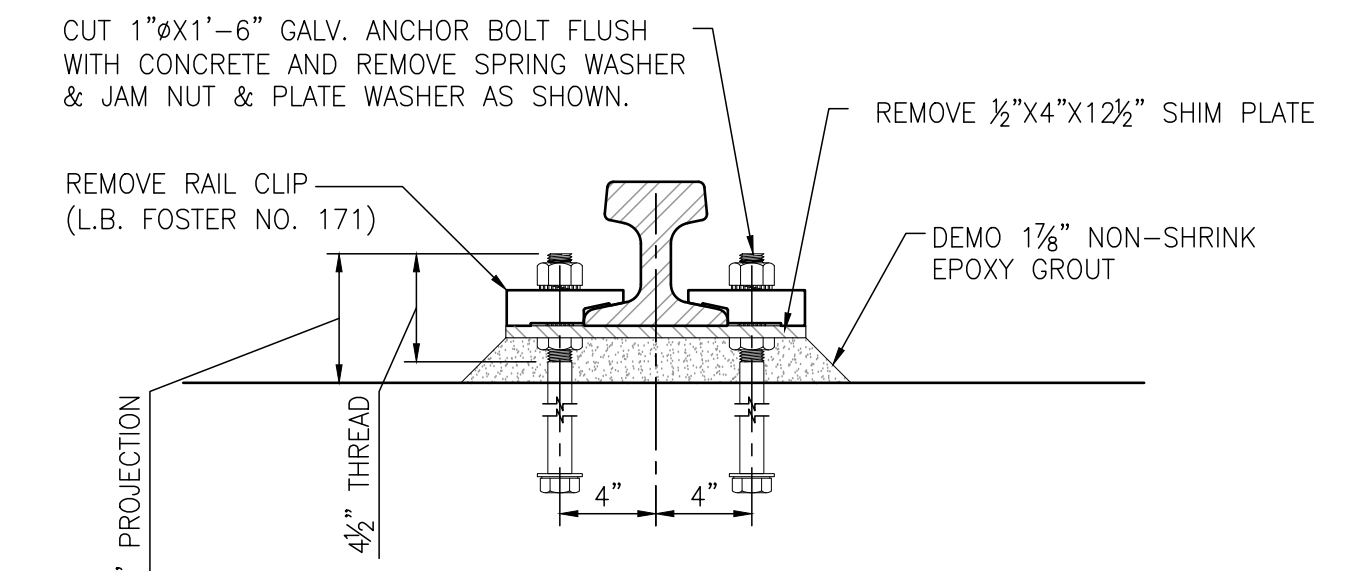
DETAIL ELEV. CRANE RAIL EXPANSION JOINT

1"=1'-0"



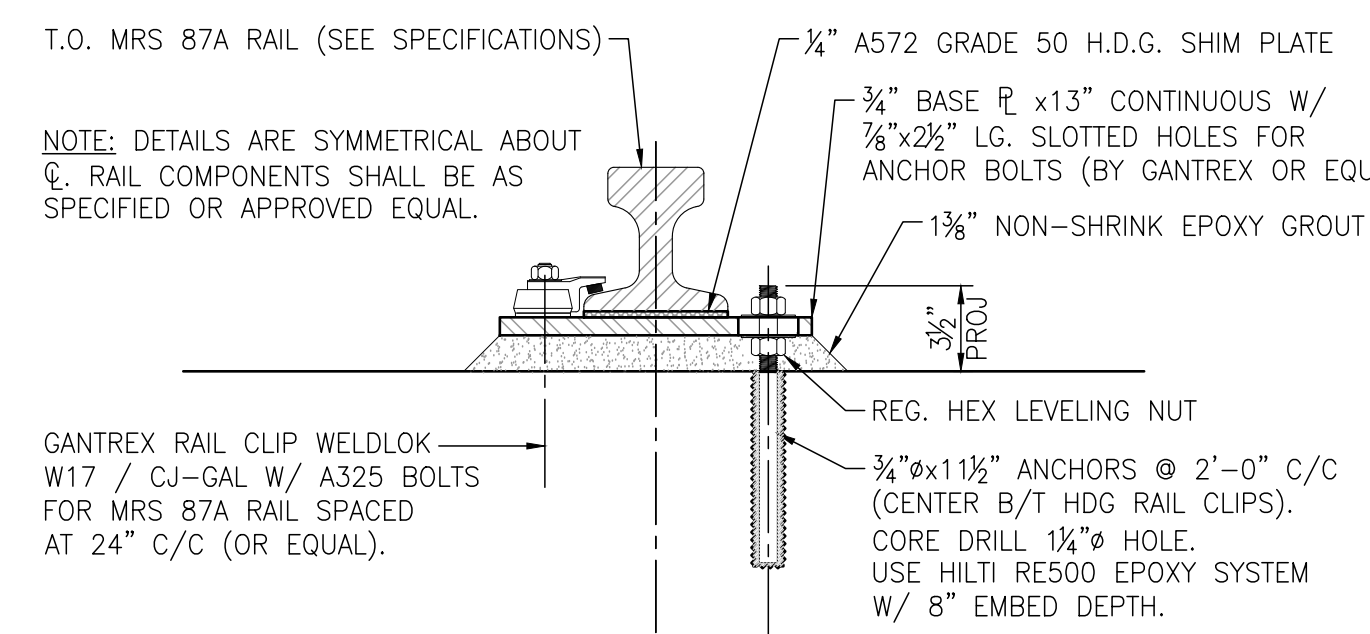
SECTION

1"=1'-0"



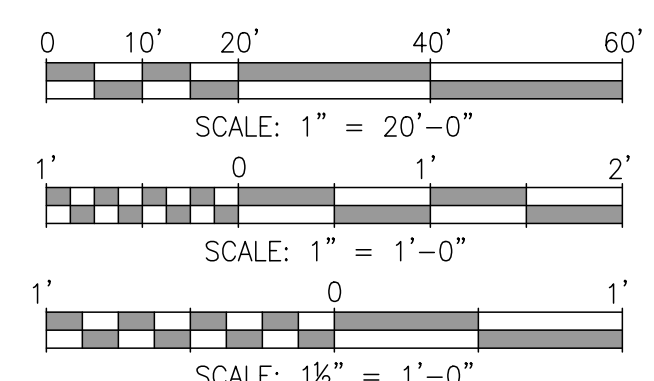
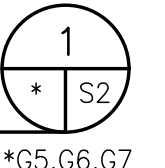
EXISTING RAIL DEMO SECTION

1-1/2"=1'-0" TYP. 664 LOCATIONS



RAIL INSTALLATION DETAIL

1-1/2"=1'-0"



NOTES

- ALL CRANE RAIL SHALL BE THERMITE WELDED.

NO.	REVISION	DATE	DRAWN	CK'D	APPD	DATE
A	ISSUED FOR BID	01-30-26	ECW	JEJ	RSG	
	REFERENCE DRAWINGS					

THIS DOCUMENT IS THE PROPERTY OF APTIM. IT MAY CONTAIN INFORMATION DESCRIBING TECHNOLOGY OWNED BY APTIM AND DEEMED TO BE COMMERCIALY SENSITIVE. IT IS TO BE USED ONLY IN CONNECTION WITH WORK BEING PERFORMED BY APTIM. REPRODUCTION IN WHOLE OR IN PART FOR ANY PURPOSE OTHER THAN WORK PERFORMED BY APTIM IS FORBIDDEN EXCEPT BY EXPRESS WRITTEN PERMISSION OF APTIM. IT IS TO BE SAFEGUARDED AGAINST BOTH DELIBERATE AND INADVERTENT DISCLOSURE TO ANY THIRD PARTY.

CLIENT DWG NO:

ALABAMA PORT AUTHORITY

McDUFFIE TERMINAL - DOCK II REFURBISHMENT
SUPPLY OF RAIL AND ASSOCIATED COMPONENTS
RAIL REPLACEMENT - PLAN & DETAILS

FOR: ALABAMA PORT AUTHORITY

PROJECT NO: 4732 DWG NO: S2 REV: A